

TEXAS TECH UNIVERSITY
HEALTH SCIENCES CENTER

FACT BOOK
28th Edition

December, 2021
Prepared by the Office of the
Executive Vice President
for Finance and Operations

PREFACE

The Office of the Executive Vice President for Finance and Operations is pleased to provide Texas Tech University Health Sciences Center with a Fact Book. This edition is the 28th annual issue produced by this office as a service to TTUHSC.

We offer this Fact Book as a means of providing a common set of data which will be readily available to decision-makers throughout the Health Sciences Center. We hope that the Fact Book will also aid in achieving the institution's goal of providing the highest standard of excellence in higher education while pursuing continuous quality improvement, stimulating the greatest degree of meaningful research, and supporting faculty and staff in satisfying those whom we serve.

We encourage and invite comments, corrections, and suggestions and as a means of improving future issues.

This Fact Book can be accessed on-line at <https://www.ttuhscc.edu/about/factbook.aspx> .

Statement of Accreditation

Texas Tech University Health Sciences Center is accredited by the Southern Association of Colleges and Schools Commission on Colleges (SACSCOC) to award baccalaureate, masters, doctoral, and professional degrees. Questions about the accreditation of the Texas Tech University Health Sciences Center may be directed in writing to the Southern Association of Colleges and Schools Commission on Colleges at 1866 Southern Lane, Decatur, Georgia 30033-4097, by calling (404) 679-4500, or by using information available on SACSCOC's website (www.sacscoc.org).

A member of the Texas Tech University System, TTUHSC has been accredited by the Southern Association of Colleges and Schools Commission on Colleges (SACSCOC) as a separate institution from Texas Tech University since 2004. TTUHSC received its last reaffirmation of accreditation from SACSCOC in 2019. TTUHSC will submit a Fifth-Year Interim Report in the spring of 2025.

MISSION, VISION AND VALUES

MISSION

As a comprehensive health sciences center, our mission is to enrich the lives of others by educating students to become collaborative healthcare professionals, providing excellent patient care, and advancing knowledge through innovative research.

VISION

Transform health care through innovation and collaboration

VALUES

One Team - Unite and include diverse perspectives to achieve our mission

Kindhearted - Exceed expectations with a kind heart, helping hands, and a positive attitude

Integrity - Be honorable and trustworthy, even when no one is looking

Visionary - Nurture innovative ideas, bold explorations, and a pioneering spirit

Beyond Service - Create and deliver positive defining moments

TABLE OF CONTENTS

TABLE OF CONTENTS

PREFACE

MISSION, VISION & VALUES

TABLE OF CONTENTS

SECTION I

HISTORY

TTUHSC Service Region Map

TTUHSC Factsheet

Historical Information

SECTION II

ORGANIZATIONAL CHARTS

Organizational Chart - TTUHSC

Organizational Chart - Provost

Organizational Chart - Executive Vice President for Finance & Operations

Organizational Chart - Executive Vice President for Rural & Community Health

Organizational Chart - Senior Vice President for Research & Innovation

Organizational Chart - Vice President for Information Technology / Chief Information Officer

Organizational Chart - Vice President for Facilities and Safety Services

Organizational Chart - Vice President for External Relations

Organizational Chart - Vice President for Governmental Relations & Managed Care

Organizational Chart - Vice President for Institutional Compliance / Institutional Privacy Officer

Organizational Chart - Executive Vice President, Clinical Affairs / Dean, School of Medicine

Organizational Chart - Dean, Graduate School of Biomedical Sciences

Organizational Chart - Dean, School of Health Professions

Organizational Chart - Dean, School of Nursing

Organizational Chart - Dean, School of Pharmacy

SECTION III

PROGRAMS

Academic (Certificate and Degree) Programs by Campus

SECTION IV**STUDENTS**

Enrollment Trends
Enrollment Trends by School
Enrollment by Campus / by School
Enrollment by School / by Campus
Enrollment by Ethnicity & Gender / by School
Degree Information
Number of Graduates by School
Graduate Specialties - School of Medicine
Pass Rates by School
Financial Aid Information

SECTION V**RESIDENTS**

Enrollment Statistics for Residency Programs (School of Medicine)
Resident Distribution (School of Medicine)
Enrollment Statistics for Residency Programs (School of Pharmacy)
Resident Distribution (School of Pharmacy)

SECTION VI**PERSONNEL**

Faculty/Staff History - Demographics
Faculty/Staff Headcount by Campus
Faculty Count by School
Faculty Count by Campus / by School
Staff Count by Campus
Budgeted FTE's by Campus
Budgeted FTE Detail by Campus / by School
Employee Headcount by Campus

SECTION VII**LIBRARY**

Summary of Library Holdings
Summary of E-Resource Statistics

SECTION VIII**FINANCIAL**

Revenues
Expenditures and Net Transfers
Endowments
Operating Budget History
Operating Budget History by Campus
Budget by Campus / by School

SECTION IX**RESEARCH**

Research External Funding Awards
Research Expenditures

SECTION X**SPACE**

Facilities Inventory Report
Leased Space Report
Campus Maps

SECTION XI**ALUMNI**

Alumni by School (Cumulative)

SECTION XII**PRACTICE INCOME PLANS**

Medical Practice Income Plan (MPIP)
Health Professions Practice Income Plans
Nursing Practice Income Plan
Pharmacy Practice Income Plan

SECTION XIII**PERFORMANCE MEASURES**

Performance Measures

HISTORY

TTUHSC Service Region

 TTUHSC Campus (6)

 TTUHSC Area Health Education Center Office (7)

 Managed Care (27)*

 Community Telemedicine Sites (3)

 Other Telemedicine (10)**

 TTUHSC Service Line

 TTUHSC Service Area

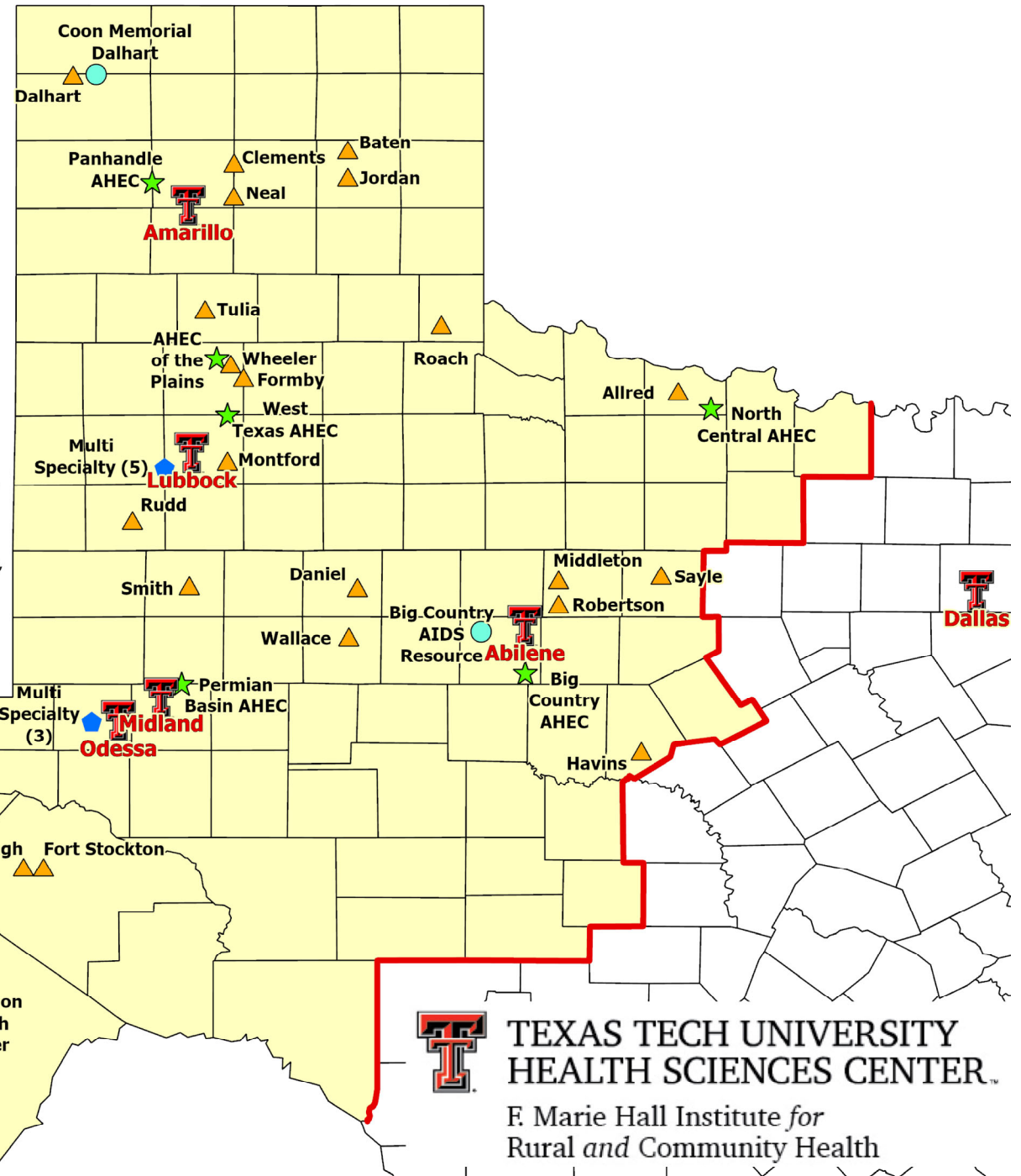
*Managed Care (MC) provides medical, dental, and behavioral health services to approximately 30,000 total offender patients, 31,000 in 27 Texas Department of Criminal Justice (TDCJ) units. These facilities are located in 20 West Texas cities. All health services clinics and infirmaries have telehealth capabilities which allows greater access to quality care, and does so, in a safe, effective, and efficient manner.

**Some Telemedicine Sites have multiple specialties collocated, the number of which is identified next to the name on the map.

Multi Specialty (2)

 Desert Mountain AHEC

 Sanchez



**TEXAS TECH UNIVERSITY
 HEALTH SCIENCES CENTER**

F. Marie Hall Institute for
 Rural and Community Health

**TEXAS TECH UNIVERSITY HEALTH SCIENCES CENTER
FACT BOOK CAMPUS FACTS**

	Lubbock	Amarillo	Permian Basin	Abilene	Dallas	Distance Education	Managed Care	Total
Students - Fall 2021								
School of Medicine	578	114	41	-	-	-		733
School of Nursing	303	-	60	176	-	1,282		1,821
School of Health Professions	684	52	163	-	-	1,154		2,053
Jerry H. Hodge School of Pharmacy	27	130	-	106	241	-		504
Grad. School of Biomedical Sciences	125	25	-	30	-	87		267
Total Students	1,717	321	264	312	241	2,523		5,378

Full Time Employees - Fall 2021								
Full Time Faculty	503	113	68	40	29		-	753
Full Time Staff	2,122	503	402	56	18		603	3,704
Total FT Faculty and Staff	2,625	616	470	96	47		603	4,457

GME Residents (Fall 2021)	312	99	146	-	-			557
----------------------------------	------------	-----------	------------	----------	----------	--	--	------------

MPIP Statistics - Fiscal Year 2021								
Clinic Visits	355,621	105,324	96,824	-	-			557,769
Patients Served	125,705	44,272	32,538	-	-			202,515
Inpatients Served	19,659	14,820	6,033	-	-			40,512

Budget * (FY 2022)	\$499,057,018	\$87,014,711	\$53,934,013	\$9,129,020	\$5,907,124		\$134,009,114	\$789,051,000
---------------------------	----------------------	---------------------	---------------------	--------------------	--------------------	--	----------------------	----------------------

Space (Sq. Ft.) - Owned Facilities	1,533,180	468,746	277,601	141,455	64,765		-	2,485,747
---	------------------	----------------	----------------	----------------	---------------	--	----------	------------------

* Lubbock Budget total includes \$73,207,317 Restricted Multi-campus

TEXAS TECH UNIVERSITY HEALTH SCIENCES CENTER

History

The Texas Tech University School of Medicine was created by the 61st Texas Legislature in May, 1969 as a multi-campus institution with Lubbock as the administrative center, and with regional campuses at Amarillo, El Paso, and Odessa. In 1979, the charter was expanded to become the Texas Tech University Health Sciences Center (TTUHSC), leading the way for establishment of the School of Nursing, School of Health Professions, and the Graduate School of Biomedical Sciences. In 1993, the legislature authorized the establishment of a School of Pharmacy to be located in Amarillo. In addition, Health Professions programs were expanded to Amarillo and the Permian Basin. In 2003, the legislature authorized the establishment of a four-year medical school in El Paso, and in 2011, the Gayle Greve Hunt School of Nursing was established, also located in El Paso. Texas Tech University Health Sciences Center at El Paso (TTUHSC at El Paso) was established in May 2013 by the 83rd Texas Legislature as the fourth and newest university in the Texas Tech University System (TTUS). TTUHSC's schools are committed to regionalized, multi-campus educational experiences, and to the related biomedical research, graduate studies, patient care and community service required of a health sciences center. A primary effort is made to achieve a balanced group of students with qualified minority students, diverse age groups, and heterogeneous backgrounds in educational and life experiences.

TTUHSC has as its major objectives the provision of quality education and development of academic, research, patient care, and community service programs to meet the health care needs of West Texas, which in total is comprised of 108 counties and represents 50% of Texas' land mass and 9.4% of its total population. This 131,000 square mile service area and population of 3.1 million has been, and remains highly underserved by health professionals and accessible health care facilities, despite the substantial and meaningful contribution made by our institution. Demographic shifts in West Texas populations, as well as socioeconomic and epidemiologic characteristics of its sub-groups, create major and specific demands for service. While education of students and residents remains the primary focus of the institution, there has been an important impact on the health status of West Texas. The lack of a single locus of population density has resulted in the regionalization of medical and health care education and patient care on multiple geographically separated campuses. In providing an excellent quality undergraduate, graduate, and continuing health professional education at each site, the health needs of the larger community have been better met and relevant indices of health status demonstrate significant improvement. To continue to provide excellent health care for the people of West Texas, a special effort is made to recruit applicants from West Texas and from rural and border communities. Students from these areas are more likely to service their home regions upon graduation, which ensures the long-term perpetuation of quality health care in West Texas and that the objectives of TTUHSC are continually met.

TTUHSC is a component of the Texas Tech University System. The President of TTUHSC reports to the Chancellor, who is the Chief Executive Officer of the System. The Chancellor and the President are responsible to the TTUS Board of Regents, which sets overall policy for TTUS, Texas Tech University, TTUHSC, TTUHSC El Paso, and Angelo State University. The current members of the Board of Regents are as follows:

<u>Regent</u>	<u>Term Expires</u>	<u>Hometown</u>
Arcilia Acosta	Jan. 31, 2027	Dallas
Cody Campbell	Jan. 31, 2027	Fort Worth
Pat Gordon	Jan. 31, 2027	El Paso
Mark Griffin, Vice Chairman	Jan. 31, 2025	Lubbock
Ginger Kerrick Davis	Jan. 31, 2025	Webster
J. Michael Lewis, Chairman	Jan. 31, 2023	Dallas
John Steinmetz	Jan. 31, 2023	Dallas
John Walker	Jan. 31, 2023	Houston
Dusty Womble	Jan. 31, 2025	Lubbock
Keaghan Holt, Student Regent	May 31, 2022	Seguin

The Provost and Chief Academic Officer reports to the President as Chief Executive Officer of TTUHSC. The following positions of senior academic leadership report to the Provost and Chief Academic Officer: Deans of the School of Medicine, School of Nursing, School of Health Professions, School of Pharmacy, and the Graduate School of Biomedical Sciences. Established in 2019, the Office of the Provost seeks to advance the academic mission of the institution through effective collaboration with all HSC stakeholders.

Administrative governance and authority of the School of Medicine is situated in Lubbock, and the Dean is fully responsible for the conduct and maintenance of quality educational experiences and related academic and clinical programs offered by the campuses at Amarillo and the Permian Basin. The Regional Deans of Medicine at Amarillo and Odessa are responsible to the Dean of the School of Medicine in Lubbock for academic programs enabling the Dean to maintain quality assurance in the academic program. The School of Nursing and the School of Health Professions utilize the same administrative model. Regional Deans of Health Professions in Amarillo, Odessa and Midland; and the Regional Deans of Nursing in Abilene, Odessa, Amarillo and Dallas report directly to their respective Deans in Lubbock. The Dean of Pharmacy is located in Amarillo, with Regional Deans located in Lubbock, Amarillo, Dallas, and Abilene reporting to the Dean in Amarillo. This regional concept allows the schools to establish and operate student education programs, physician residency training programs, continuing education programs, and outreach programs that have proved to be a vital factor in the placement of graduates in practice sites in West Texas, and to support the practice of medicine, nursing, and health professions in this vast area.

TTUHSC is continually striving to make the institution and its programs the most cost effective possible, which has been particularly important as the institution has been growing and developing its programs. In 1985, general revenue made up more than 50% of the total operating budget of TTUHSC. Now, in fiscal year 2022, general revenue is 23.9% of the total budget. Even though TTUHSC has been able to sustain the growth of its schools and programs, adequate levels of state appropriated funds are essential to accomplish the central mission of providing health care education of the highest quality.

TTUHSC is proud of the accomplishments that have been achieved by this institution, some of which are included as follows:

SCHOOL OF MEDICINE

- Over the past five years, approximately 51% of graduates have remained in Texas to complete residency training, and an average of 20% of School of Medicine graduates have remained in a TTUHSC program for residency training.
- Over 20% percent of the practicing physicians in West Texas are TTUHSC medical school and/or residency graduates.
- Over the past five years, an average of 53% of all medical school graduates have elected to enter the primary care specialties of Family Medicine, Internal Medicine, Obstetrics and Gynecology, and Pediatrics. In 2021, 55% of graduates elected primary care specialties.
- Each of the TTUHSC campuses has been shown to place the majority of its program graduates who stay in West Texas within a 75-mile radius of the campus. The regional campus system has a positive impact on the geographic distribution of physicians throughout West Texas.
- The School of Medicine has combined efforts with Texas Tech University to offer joint academic programs addressing the growing needs of practicing physicians. In the summer of 1998, a venture began with the Rawls College of Business Administration providing the ability to obtain both MD and MBA degrees. A joint JD and MD program to be offered in collaboration with the TTU School of Law began in the fall of 2009 where students interested in future careers focusing on health care policy, bioterrorism, and medical law can receive both degrees.
- The School of Medicine offers an accelerated pathway to the MD degree called the Family Medicine Accelerated Track (FMAT). In this program, students complete requirements for the MD degree in three years, reducing the time and expense of medical school. Graduates enter residency at one of the three TTUHSC Family Medicine programs. As of 2021, the program has 67 graduates and 68% of graduates are currently practicing in rural or medically underserved communities in Texas.
- In 2016, the School expanded clinical training in Lubbock through a collaborative partnership with Covenant Health Systems. With the support of volunteer faculty, 30 students are assigned to complete Year 3 clerkships at Covenant Medical Center.
- The campuses of the School of Medicine operate 22 individually accredited residency programs and 17 fellowship programs in West Texas. As of September 2021, these programs had 557 total residents in training, which includes 55 fellows, of which 334 (59.96%) were in primary care fields of Family Practice, Internal Medicine, OB/GYN and Pediatrics. Of the 334 total primary care residents in training, 126 are specifically in Family Practice. The 39 residency and fellowship programs have 160 first year trainees, and will have approximately 168 residents and fellows in 2022.

- The three campuses operate a total of 27 clinical departmental units and numerous clinical services and education programs which were previously unavailable in the West Texas region. A partial list of specialty services includes: care for women and infants, including perinatal care and neonatal intensive care (three campuses), pediatric subspecialty services and intensive care (three campuses), trauma centers and emergency medicine (one campus), neurology and neuroscience centers (one campus), a center for pain treatment and research, a regional burn center, a center for Alzheimer's disease, a cancer center, and a program for bone marrow transplantation.
- The patient care programs of the School of Medicine serve as the base for clinical education of medical students and residents, the base for clinical research and as a major source of care for citizens of West Texas. In fiscal year 2021, the School of Medicine provided 557,769 clinical visits of care and served 202,515 patients. The School also served 40,512 inpatients in its affiliated hospitals, and provided a total of \$35,225,059 in uncompensated care.

GRADUATE SCHOOL OF BIOMEDICAL SCIENCES

- The Graduate School of Biomedical Sciences (GSBS) became a separate school in 1994 to provide educational training to students who seek research careers in biomedical sciences. The GSBS provides superior graduate education by increasing knowledge and understanding through scholarship and research. The mission of the School is to educate the next generation of scientists and health-related professionals in a dynamic and productive research environment that fosters creativity and discovery. This is accomplished by providing each student with a broad understanding of biomedical research while promoting the specialization needed to succeed as an independent investigator in an environment that highly values diversity of people and ideas.
- The GSBS currently has five graduate programs: Biotechnology (M.S. only), Biomedical Sciences (M.S. and Ph.D.), Graduate Medical Education Sciences (M.S. only), Public Health (M.P.H. only), and Pharmaceutical Sciences (M.S. and Ph.D.).
Program/Concentrations by location include:
 - Lubbock: Biochemistry, Cellular & Molecular Biology; Immunology & Infectious Diseases; Molecular Biophysics; Translational Neuroscience & Pharmacology; and three MS only programs: Graduate Medical Education Sciences; Biotechnology and Public Health.
 - Amarillo: Pharmaceutical Sciences
 - Abilene: Biotechnology; Public Health; Pharmaceutical Sciences
 - Online: Public Health (M.P.H. and certificate)
- GSBS stands out in that its tuition/fees and student indebtedness is among the very lowest in the state, in part, by GSBS paying tuition and fees for all Ph.D. students. The average time to a Ph.D. degree dropped to less than five years, and the number of students matriculating across all programs has substantially increased. Faculty to student ratios remain high, and student publication and presentation rates are rapidly rising.

- The overall enrollment in GSBS increased 8% in 2020 and 18% in 2021 as compared to 2019 enrollment numbers. Three programs showed significant growth over the same time period: Pharmaceutical Sciences PhD program in Abilene grew 89%; the MS in Biotechnology grew 47%, and Public Health MPH grew 29%.
- GSBS strongly focused on the mental health of our students over this past year. In October, 218 students participated in the Suicide Prevention Seminar. A few months later, 93 students attended the Student Wellness seminar. Throughout the year, GSBS provided numerous social events to engage students and to strengthen their overall well-being.
- The Graduate Student Association hosted the 33rd Annual Student Research Week (SRW) to showcase phenomenal research conducted throughout TTUHSC. The theme was “NEURO: New Experience Unfold Research Opportunities”. This event was completely virtual and hugely successful. A total of 261 abstracts were submitted and a new category was added – Literature Review. The SRW Committee secured two outstanding and highly distinguished keynote speakers: Bryan Roth, MD, PhD from the University of North Carolina Chapel Hill; and Susan Amara, PhD from the University of California, San Diego.
- Approval of the Julia Jones Matthews School of Population and Public Health was received by the TTUS Board of Regents at the August, 2021 meeting, and on September 7, 2021 by the Texas Higher Education Coordinating Board. A new dean for the School is actively being recruited for the Abilene campus. This new school will advance the missions of improving the health of local, national and international populations and be the source of scientific advances and best practices in population and public health, and will be the new home of the Department of Public Health.
- In the past 10 years, applications to and enrollment in the Graduate Medical Education Sciences program has increased more than ten-fold. 96% of GMS graduates that have applied to a medical school have been accepted. A small number of GMES graduates choose to continue in education as instructors.

SCHOOL OF NURSING

The TTUHSC School of Nursing is the only nursing school on the South Plains that provides baccalaureate, masters, and doctoral education. Since its inception in 1979, the school has offered innovative educational programs to meet the needs of Texas residents. With an expanded selection of program options offered throughout Texas and beyond, the School of Nursing continues to help bolster the state’s nursing workforce by educating over 2,700 students each year.

The first students were admitted to the Traditional Bachelor of Science in Nursing four-year degree on the Lubbock campus in August, 1981. Four years later, RN to BSN only students were admitted in the Permian Basin. The first students were admitted to the Master of Science in Nursing track in 1988, and the Accelerated Second-Degree track was launched in Austin and in Lubbock in 2005, and is now offered in Abilene, the Permian Basin, Amarillo, Dallas-Ft. Worth area, and San Antonio. In 2008, the inaugural cohort of doctoral students was admitted into the Doctor of Nursing Practice degree program. In 2009, the Traditional BSN program was expanded to include Abilene and the Permian Basin, and in 2021, was expanded to include Mansfield.

The TTUHSC School of Nursing is known for innovation in nursing education, excellent student retention and graduation rates, above national average National Council Licensure Examination (NCLEX) scores, and producing well-prepared nurses for West Texas and beyond.

UNDERGRADUATE STUDIES: The School of Nursing offers three programs to obtain the Bachelor of Science in Nursing degree:

- Traditional BSN Track
 - RN to BSN Track (for individuals who already hold a license as a Registered Nurse)
 - Accelerated BSN Program
 - Second Degree BSN Track * (for individuals with a bachelor's degree in another field)
 - Veteran to BSN Track * (for veterans and active duty military personnel with a healthcare specialist rating)
- * The Second-Degree BSN and Veteran to BSN tracks comprise the Accelerated BSN Program, and students enrolled in these tracks complete the same curriculum. Admission criteria differ, and Veteran to BSN students have the opportunity to complete Comprehensive Assessment Placement exams based on prior military/medical experience.

GRADUATE PROGRAMS: The Graduate Departments use a variety of online technology teaching-learning methods to offer distance education classes and face-to-face classes in Lubbock, Odessa and Abilene. The school offers these graduate degrees and certificates:

- MSN Leadership Program
 - Master of Science in Nursing – Administration Track
 - Dual Degree: Master of Science in Nursing / Master of Business Administration (began Spring 2021)
 - Master of Science in Nursing – Education Track
 - Master of Science in Nursing – Nursing Informatics Track
- DNP Program
 - Executive Leadership Track
 - Advanced Practice Nursing (post-master's) Track
 - Bachelor of Science in Nursing to Doctor of Nursing Practice (BSN to DNP) Track
 - Family Nurse Practitioner (FNP) Track
 - Psychiatric Mental Health (PMH) Track
- BSN to MSN APRN (Advanced Practice Registered Nurse) Program
 - Master of Science in Nursing – Family Nurse Practitioner (FNP) Track
 - Master of Science in Nursing – Adult Gerontology Acute Care Nurse Practitioner (AGACNP) Track
 - Master of Science in Nursing – Pediatric Nurse Practitioner w/a Primary Care Focus (PNP-PC) Track
 - Master of Science in Nursing – Pediatric Nurse Practitioner w/ an Acute Care Focus (PNP-AC) Track
 - Master of Science in Nursing – Nurse Midwifery Track
 - Master of Science in Nursing – Psychiatric Mental Health (PMHNP) Track

- Post-Master APRN Program
 - Family Nurse Practitioner (FNP) Track
 - Adult Gerontology Acute Care Nurse Practitioner (AGACNP) Track
 - Pediatric Nurse Practitioner w/ a Primary Care Focus (PNP-PC) Track
 - Pediatric Nurse Practitioner w/ an Acute Care Focus (PNP-AC) Track
 - Nurse Midwifery (NMW) Track
 - Psychiatric Mental Health Nurse Practitioner (PMHNP) Track

A Center of Excellence in Evidence-Based Practice (CEEBP) has been established at the School of Nursing. The CEEBP forms collaborations to improve the care and safety of patients through consultation, research, education, and practice as demonstrated through multiple avenues. The CEEBP is multidisciplinary and/or interdisciplinary groups of faculty and their associates who have been brought together for the pursuit of research, education, and/or clinical activities. The goals of this Center integrate into the strategic plan of the School of Nursing.

CAMPUS/LOCATION: The TTUHSC School of Nursing has educational programs at the following locations:

- Lubbock
- Abilene
- Permian Basin
- Dallas-Fort Worth
- Amarillo
- Austin
- Mansfield
- San Antonio

SCHOOL OF HEALTH PROFESSIONS

- The School of Health Professions offers 21 degree programs (doctoral, masters, baccalaureate, post baccalaureate) and six graduate certificate programs. With a Fall 2021 enrollment of 2,053 students on four campuses (Lubbock, Amarillo, Odessa and Midland) and online, it is one of the largest and most diverse schools of Health Professions in Texas. From our first class of 18 students in 1983, the School has grown steadily over the past 38 years. The mission of the School of Health Professions is to enhance the quality of life of those we serve by delivering exemplary holistic student-centered education and cultivating research opportunities, while championing interprofessional and clinical care partnerships that are innovative and relevant to the communities we serve.

- Departments within the School of Health Professions include:

Laboratory Sciences and Primary Care

MS, Molecular Pathology

BS, Clinical Laboratory Science

Clinical Laboratory Science Certificate

Master of Physician Assistant Studies (MPAS)

Second Degree in Clinical Laboratory Science (BS)

Rehabilitation Sciences

PhD, Rehabilitation Science

- Movement Sciences and Disorders

- Communication Sciences & Disorders

Master of Athletic Training (MAT)

Post-Professional Doctor of Occupational Therapy (OTDP)

Doctor of Science (ScD) in Physical Therapy

Doctor of Physical Therapy (DPT)

Doctor of Occupational Therapy (OTD)

Master of Occupational Therapy (MOT)

Speech, Language and Hearing Sciences

Doctor of Audiology (AuD)

BS, Speech, Language and Hearing Sciences

MS, Speech-Language Pathology

Second Degree in Speech, Language & Hearing Sciences (BS)

Healthcare Management and Leadership

MS, Healthcare Administration

BS, Healthcare Management

Graduate Certificate Programs: Health Informatics and Data Analytics, Health Systems Policy and Management, Healthcare Finance & Economics, Health Systems Engineering and Management, Long Term Care Administration

Clinical Counseling and Mental Health

MS, Clinical Rehabilitation Counseling

MS, Clinical Mental Health Counseling

MS, Addiction Counseling

Graduate Certificate Program: Veteran Services

- To increase educational access to health professionals who are serving communities throughout rural West Texas and the state, some programs rely extensively on non-traditional formats or distance education technologies.
 - The Doctor of Physical Therapy (DPT) program's innovative 3-campus program model (Amarillo, Lubbock and Odessa) allows the DPT program to influence and serve a broad swath of western Texas. The DPT program was one of the first programs in the nation to use this model.
 - The ScD-PT employs a unique combination of weekend clinical clusters in communities around the state and nation that are supported by distance education technology, as well as short, intensive periods on campus to offer practicing physical therapists the opportunity to achieve advanced clinical skills and competencies while maintaining their practice.
 - The Post-Professional Doctor of Occupational Therapy (OTD) online program is an exciting new health care degree offered by the School of Health Professions. This recently launched online degree program is designed for licensed occupational therapists who have earned a bachelor's or master's degree in occupational therapy and want to elevate their professional occupational therapy degree to the doctoral level. The online post-professional OTD program

provides licensed occupational therapists with the advanced knowledge and practice skills needed to elevate their professional competencies, advance their careers, and position them for leadership roles within the health care environment and in the occupational therapy profession.

- The M.S. in Healthcare Administration provides an online opportunity for traditional clinicians and other health professionals to expand their knowledge and skills in healthcare administration without leaving their communities.
 - The M.S. in Clinical Rehabilitation Counseling, M.S. in Clinical Mental Health Counseling and M.S. in Addiction Counseling programs provide students with the skills necessary to become successful professional counselors. Additionally, students are trained in telehealth techniques during their clinical practicums, preparing them for distance-service provision.
 - The Bachelor of Science in Clinical Laboratory Science program offers a second-degree online tract for students who already hold a Bachelor of Science degree. A second online tract is available for students who wish to earn a certificate in clinical laboratory science. Both online tracts qualify students to sit for the national certification in clinical laboratory science through the American Society of Clinical Pathology Board of Certification.
 - The Bachelor of Science in Healthcare Management program provides a web-based baccalaureate degree for traditional undergraduate students and graduates of community college Associate of Applied Science programs to prepare for career ladder progression, while continuing employment within their communities.
- In addition to its 21 different degree programs, the School operates two Centers that have been approved by the Texas Tech University System Board of Regents:
 - The **Center for Speech, Language and Hearing Research** within the Department of Speech, Language and Hearing Sciences seeks to integrate and support cross-disciplinary efforts in research, teaching and patient care that are aimed at increasing understanding and treatment of hearing, speech and/or language disorders across the lifespan.
 - The **Center for Rehabilitation Research** within the Department of Rehabilitation Sciences is an internationally renowned research, education and clinical assessment center that serves TTUHSC and the region. The Center is dedicated to improving the lives of people who have functional limitations caused by physical impairments. The Center consists of six core faculty members, associate faculty, and four clinical research laboratories, including the Clinical Anatomy Research Laboratory, Clinical Biomechanics (Gait) Research Laboratory, Clinical Musculoskeletal Research Laboratory, and the Clinical Postural Control Research Laboratory. The Center provides a rich research environment for the PhD in Rehabilitation Science program.
 - The School has an active faculty development program to encourage and provide financial support for faculty who participate in doctoral studies to strengthen the knowledge, skills and abilities of our faculty.
 - The School has a 93% first-time pass rate for all students required to complete licensure or certification requirements and a give-year 93% first-time pass rate average.

SCHOOL OF PHARMACY

- The TTUHSC School of Pharmacy (SOP) was established in 1993 as a four-year Doctor of Pharmacy (Pharm.D.) program, one of a very small number of publicly funded pharmacy schools to be created at that time in the United States in over 40 years. It has its home base in Amarillo, the only fully accredited School in TTUHSC to have its home base outside of Lubbock. The School enrolled its first Pharm.D. class of students in the Fall of 1996, with the founding class graduating in May 2000. In 1999, the Dallas and Lubbock campuses were opened as two-year Regional campuses hosting 3rd and 4th year students. In the Fall of 2007, the School expanded its 4-year Pharm.D. program to Abilene. In 2018, the Dallas campus was expanded from 2 to 4 years to offer the full complement of the Pharm.D. education to the Dallas/Fort Worth metroplex, creating the 3rd 4-year Pharm.D. campus for the School.
- On April 25, 2019, the TTUHSC School of Pharmacy was named to honor Amarillo pharmacist, businessman, and philanthropist Jerry H. Hodge. The naming was approved by the Texas Tech University System Board of Regents, and it honors Mr. Hodge's lifelong dedication and support to TTUHSC. Mr. Hodge's leadership and initiative at the state and local level were instrumental in helping the university establish the School of Pharmacy in 1993.
- In addition to the traditional Pharm.D. Program, the School also supports:
 - a graduate Ph.D./M.S. Program in Pharmaceutical Sciences and a graduate M.S. Program in Biotechnology in collaboration with the Graduate School of Biomedical Sciences to train pharmacists and scientists in medicinal chemistry, pharmaceuticals, pharmacology, biotechnology and drug development;
 - a joint Pharm.D./M.B.A. program in conjunction with the TTU Rawls College of Business; and
 - a Pharmacy Residency Program in advanced pharmacy education. Through the Residency Program, pharmacists gain higher level practice skills leading to specialization beyond the basic Pharm.D. professional degree.
- Over the course of its history, the School has conferred 2,387 Pharm.D. degrees and 138 have graduated with a joint Pharm.D./MBA degree. In addition, 448 residents have completed the Pharmacy Residency program. In the Pharmaceutical Sciences program, a total of 114 doctoral Ph.D. degrees have been awarded, as well as 14 Master of Sciences degrees.
- The School's vision statement focuses on the pharmacist in the modern healthcare team. The School is learner-centered, collegial, interprofessional, and cutting edge in pharmacy, dedicated to the highest standards of care for patients.
- The first class of Pharm.D./M.B.A. students began coursework in the Summer of 2009. The Health Organization Management program at Rawls College of Business is one of the strongest accredited programs in the nation.

- The School is committed to providing West Texas and the Dallas/Fort Worth Metroplex with innovative pharmaceutical care. The faculty and pharmacy residents provide patient care through various contracts with external healthcare institutions including hospitals, community pharmacies, nursing homes, clinics, and the Texas Department of Criminal Justice.
- The School manages two pharmacies as teaching models of modern pharmaceutical care. These pharmacies include:
 - Amarillo - Amarillo Pharmaceutical Care Center
 - Lubbock - TTUHSC Pharmacy (main campus)
- The School hosts the Texas Panhandle Poison Center (TPPC), which serves 71 counties that cover the Amarillo, Lubbock, Wichita Falls and Abilene health marketing areas. For FY 2021, the TPPC handled 16,828 calls on poisons and related issues. Further, the School hosted six (6) Medication Cleanout events which took in 7,619 pounds of unwanted medications and 1,151 pounds of used sharps during FY 2021 in Amarillo, Abilene, Pampa and Lubbock that might otherwise have been disposed of improperly.
- In addition to its direct patient care initiatives, the School supports a significant research program with >25,000 sq. ft. of dedicated laboratory research space. The School supports four research centers focused on cancer biology, clinical pharmacology and experimental therapeutics, blood-brain barrier research, and immunotherapy and biotechnology.
- The SOP receives significant external research grant and contract funding. Annual extramural grant awards to the School for FY 2021 exceeded \$4.4 million with grants from the National Institutes of Health (NIH), the Department of Defense (DOD), and the Cancer Prevention and Research Institute of Texas (CPRIT). Overall research expenditures by the School exceeded \$8.9 million during the same period from all sources.
- Each year the School convenes a research retreat named Research Days to bring together faculty, residents, staff and students to discuss research progress over the previous year and to foster future collaborations on new projects and initiatives. The event is held annually in June.

INSTITUTES

TTUHSC is home to five Institutes: the F. Marie Hall Institute for Rural and Community Health, the Laura W. Bush Institute for Women's Health, the Garrison Institute on Aging, the Clinical Research Institute, and the Institute of Anatomical Sciences.

F. Marie Hall Institute for Rural and Community Health:

The F. Marie Hall Institute for Rural and Community Health collaborates with various stakeholders to study rural health issues, identifies or formulates innovative rural health solutions, and contributes to the scientific basis for programs and projects that lead to improved health care access, better health outcomes, and sustainable best practices. The Institute houses the TexLa Telehealth Resource Center, one of only 14 in the

national telehealth network funded by HRSA; the West Texas Area Health Education Center (AHEC), and the Research, Reporting, and Data Management Division, that produces the *Rural Health Quarterly* as well as the production and presentation of award-winning research, analytics, and data visualization services. The West Texas Area Health Education Center (AHEC) is the head office for the West Texas region, with six regional offices in Canyon, Plainview, Midland, Abilene, El Paso, and Wichita Falls. WTAHEC coordinates activities to recruit high school students and other job seekers interested in entering the health care workforce. For community health workers, WTAHEC offers certification trainings and continuing education programs, covering topics in social work and COVID-19 policies. In the TTUHSC community, WTAHEC provides training opportunities for health professions undergraduates with the AHEC Scholars program for college students and AHEC Jr. Scholars for high school students. WTAHEC also publishes *H.O.T. Jobs* (Health Career Opportunities), a collection of health professions available in the state of Texas and the degrees and experiences required to work in those professions. In educational innovations, the Institute operates the Frontiers in Telemedicine (FiT) lab, which is a one-of-a-kind facility that provides competency-based education for a wide variety of health care providers and students specific to telemedicine presenting procedures, technology, coding, billing and business-related practices. During the COVID-19 pandemic, the Institute was instrumental in assisting stakeholders and the Texas Tech community at large by being a part of the West Texas 3D COVID-19 Relief Consortium, a collaborative effort involving 3D printing of face shields and emergency ventilators clips for hospitals and emergency clinics and other health care facilities in the TTUHSC Service Area. Two members of the Institute received an award as part of the TTUHSC team in the Consortium, the 2021 TTU President's Excellence in Engaged Scholarship Award, for demonstrating a commitment to the West Texas community and strengthening strategic partnerships. The Institute is an innovative and collaborative hub, where the staff focus imagination, talents, and energy to improve the health and well-being of the people and communities of West Texas and beyond.

Laura W. Bush Institute for Women's Health:

In 2000, the Women's Health Research Institute was initiated by TTUHSC in Amarillo as a community-wide effort to improve women's health through research, education and outreach. In 2007, First Lady Laura W. Bush approved the use of her name for the Institute, providing a powerful endorsement for the mission of the Laura W. Bush Institute for Women's Health. In 2008, the Institute expanded to include TTUHSC campuses in Lubbock, Amarillo, El Paso, and the Permian Basin, and in later years, San Angelo, Abilene and Dallas. The LWB Institute for Women's Health is dedicated to improving the lives of women and girls in Texas and across the nation by advancing multidisciplinary science in women's health. Recognizing that sex and gender differences matter, we promote health, individually inspired, through scientific investigation, translation of science into practice, and providing outreach that impacts the community well into the future.

Garrison Institute on Aging:

The Garrison Institute on Aging (GIA) is the keystone of the TTUHSC initiative to help older adults successfully extend and improve quality of life. From investigating the causes of neurodegenerative diseases - like Alzheimer's, Parkinson's, Huntington's Disease and Multiple Sclerosis - to educating seniors on preventive medicine and challenges impacting the geriatric population, the GIA seeks to generate and disseminate knowledge about neurodegenerative disorders and about aging and aging-related health issues. Using cutting edge research methods and state-of-the-art techniques, scientists at the Institute are actively working to identify novel targets and develop and test promising new drug compounds to improve healthy aging, and to prevent and/or stop the progression of neurodegenerative and other aging-related diseases. In addition to research facilities for behavioral studies, electrophysiology and molecular biology, the Institute houses biobanks for human brain

tissue, bodily fluids, and DNA for GIA-based research as well as collaborations engaging faculty and trainees across TTUHSC. The GIA also established a Collaborative Seed Grant Program in Aging resulting in projects led by basic scientists, clinicians, public health, and community outreach specialists that are based in nine departments across four TTUHSC schools. These projects produced preliminary data for publications, presentations, and potential grant proposals. Another key program, Project FRONTIER, initiated in 2006, continues to investigate cognitive decline and associated risk factors longitudinally among a multi-ethnic sample of adults in rural West Texas. In early 2021, Project FRONTIER Participant Assessment of COVID-19 expanded to further assess survey participants' perceptions and vaccination experiences related to COVID-19 in Lubbock and rural West Texas. The Care Partner Academy is also collaborating with TTU Psychology Department to provide mental health services to caregivers of dementia patients, free of charge. Educational and outreach programs include the Translational Research Seminar Series, Healthy Aging Lecture Series, Retired and Senior Volunteer Program, Healthy Lubbock, and National Alzheimer's Awareness Month activities.

Clinical Research Institute:

The Clinical Research Institute (CRI) provides training and facilitates clinical research performed by faculty, fellows, residents and students from each school on each campus under the umbrella of TTUHSC. Investigator-initiated clinical research is emphasized as a scholarly activity, meeting requirements such as residency and Health Sciences Center school certification. The CRI currently assists in study design, preparation of documents to submit to the Institutional Review Board, conduct of the study, statistical evaluation of data and writing of abstracts and manuscripts for over 200 studies currently. More than fifty prospective clinical studies are currently being supported by our research nurse coordinators. The number of new studies, investigators and publications increase each year, reflecting the growth of the Institute's activities.

Institute of Anatomical Sciences:

The Institute of Anatomical Sciences ([Anatomy Institute](#)) was established in 2019 and promotes interdisciplinary anatomical education, research, and outreach missions of all schools within TTUHSC. The Institute exists to create innovative and collaborative methods of improving healthcare delivery and effectiveness through greater knowledge and understanding of clinical anatomy. The Anatomy Institute houses the long-standing Willed Body Program (established in 1972) and aims to be an integral part of TTUHSC education of faculty and trainees. The Institute occupies the entire first floor (~20,000 square feet) of a newly constructed facility, and has space designated for anatomical dissection, education, research, surgical simulation, and the Willed Body Program. In FY 2021, a total of 585 students across 17 programs and courses benefitted from the Institute's space and resources. Multiple tours were conducted providing 245 individuals a walkthrough of the Institute space. One international broadcast course was conducted using the Institute's resources. Four research projects were conducted culminating in the successful dissertation defenses of two SHP students. Four universities were provided cadaver resources through the Willed Body Program. The Institute is equipped with state-of-the-art learning spaces that support multiple modes of clinical anatomy research including investigator-initiated research, research supported by grants from outside sources, and carefully selected industry-sponsored studies.

MANAGED CARE (MC)

During the 1993 Legislative session, the Texas Legislature established a Correctional Managed Health Care Advisory Committee (CMHCAC) and charged it with developing a managed health care delivery system to provide health care to Texas Department of Criminal Justice (TDCJ) offender patients. The Committee, and eventually the TDCJ, established a contract with TTUHSC to provide health care for the TDCJ facilities in the western part of the state. This region spans over 100,000 square miles; from El Paso to Dalhart to Brownwood. Of the approximately 146,000 offenders housed in TDCJ facilities statewide, TTUHSC Managed Care is responsible for the healthcare of approximately 29,000 offender patients, in 23 facilities at 18 sites.

Each state has a responsibility to meet constitutional obligations, protect public safety, and practice fiscal prudence when providing healthcare to the correctional population. This is often referred to as the Triple Aim of correctional healthcare: increased access, increased safety, and decreased cost. Each state strives to meet the Triple Aim at varying cost and varying success. Over the last thirty years, Texas has demonstrated that its public Health Related Institutions are well positioned to meet this population's unique healthcare needs. Namely, the correctional population as a whole is aging and patients with advanced age typically require more healthcare resources. The correctional population is also more likely to need behavioral health services. Today, almost 40% of offender patients have a mental health diagnosis and 12.5% require psychotropic medication management.

Despite these challenges, Managed Care continues to be a wise investment for Texas. The Texas Legislature recently commissioned a study to compare costs between Medicaid, TRS, ERS, and care provided through TDCJ. This study found that healthcare provided through the TDCJ contract had the lowest per capita cost and an overall annual increase below 5%. Furthermore, the cost of correctional healthcare in Texas is low compared to other states. In a recent report from The Pew Charitable Trusts, Texas reported lower per-capita spending than 35 other states. At the same time, TTUHSC Managed Care tracks and reports healthcare outcomes utilizing the National Committee for Quality Assurance (NCQA) Healthcare Effectiveness Data & Information Set (HEDIS) measures. Therefore, our health outcomes can be compared to care provided in any other setting. The high level of healthcare provided by TTUHSC Managed Care is also represented by the successful national accreditation of all facilities by the American Correctional Association.

The scope of healthcare services provided by Managed Care is broad and inclusive of various types of facilities. In January 1996, TTUHSC began providing behavioral health care in West Texas. These services continue at the John Montford Unit, a 550-bed psychiatric inpatient facility located in Lubbock. In addition, TTUHSC operates two special behavioral health programs at the Bill Clements Unit in Amarillo; the state's only Program for the Aggressively Mentally Ill Offenders (PAMIO), as well as, a Chronic Mentally Ill (CMI) Treatment Program, with a Sheltered Housing component. The PAMIO program has received national recognition for the innovative approaches to these challenging patients.

Managed Care also provides quality inpatient medical care to our offender patient population. In September 1996, the Western Regional Medical Facility (RMF), with a 50-bed ward, 4-bed special care unit, and 30 holding beds, opened adjacent to the psychiatric inpatient facility. The RMF includes two surgical suites and is equipped to provide endoscopy, chemotherapy, dialysis, and physical therapy. In July 2006, a 44-bed long term care unit was added, yielding a total of 128 medical/surgical and emergent care beds. These inpatient beds are fully utilized and provide collaborative opportunities among Managed Care and other TTUHSC departments and community providers.

In an effort to achieve the “Triple Aim” of correctional healthcare, TTUHSC MC has expanded telehealth capabilities to 100% of its TDCJ facilities. Primary care, specialty care, and behavioral healthcare can all be provided through the telehealth modality. In FY 21, Managed Care conducted over 30,000 telehealth visits (up 500% since FY 17) due in large part to a partnership with School of Medicine. The utilization of telehealth services provides expanded access to these healthcare disciplines without compromising quality care. HEDIS outcomes are comparable between telehealth patients and face-to-face visits. The Managed Care telehealth program also enables providers to see patients at multiple units each day without burdensome travel time and cost. Additionally, the use of telehealth reduces the need to transport patients offsite for specialty services. Managed Care developed an innovative tele-Optometry program that eliminates the need for hundreds of transports each year. This reduction in transport enhances the safety of patients, staff, and the public, while decreasing related costs for the TDCJ. In 2020, Managed Care achieved accreditation by URAC, the nation’s largest and most experienced telehealth accreditor. TTUHSC is the first Health Sciences Center in the state of Texas to achieve this distinction.

In 2019, Managed Care began engaging in new partnerships to provide health care services to additional populations. Managed Care now provides telehealth and behavioral health services within several county jails, Immigration and Customs Enforcement facilities, and Federal Bureau of Prisons facilities in Texas and New Mexico. These new service areas allow Managed Care to expand the reach of its quality healthcare services while generating revenue to support the university.

Managed Care plays an important role in TTUHSC’s educational mission. Working in the correctional setting is a valuable clinical experience with a population that has unique healthcare needs. In addition to the School of Medicine, Managed Care has provided training for students in the Advanced Practice Provider, Pharmacy, Audiology, Lab Science, and Clinical Therapy programs. Managed Care also provides clinical training sites for community nursing schools within our region. All Managed Care Pharmacy services are provided in coordination with the School of Pharmacy in Amarillo. Lab services at the Montford Unit are operated by TTUHSC. By integrating correctional healthcare into our curriculum, students and residents are exposed to a practice setting they may not have previously considered.

In 2021, Managed Care began the important work of providing COVID vaccines to healthcare staff, TDCJ staff, and the inmate patient population. To date, over 30,000 vaccines have been administered by TTUHSC Managed Care.

TTUHSC Managed Care is committed to transforming correctional healthcare through innovation and collaboration. This work has positively impacted patient lives for three decades, including many who previously never had access to quality health care.

ORGANIZATIONAL CHARTS

TEXAS TECH UNIVERSITY
 HEALTH SCIENCES CENTER
 Organizational Chart
 December, 2021

BOARD OF REGENTS
 J. Michael Lewis, Chairman
 Mark Griffin, Vice Chairman
 Arcilia Acosta
 Cody Campbell
 Pat Gordon
 Ginger Kerrick Davis
 John Steinmetz
 John Walker
 Dusty Womble
 Keaghan Holt, Student Regent

CHANCELLOR
 Tedd L. Mitchell, MD

PRESIDENT
 Lori Rice-Spearman, PhD

Audit Services

General Counsel

Chief Health Officer
 Ron Cook, DO, MBA

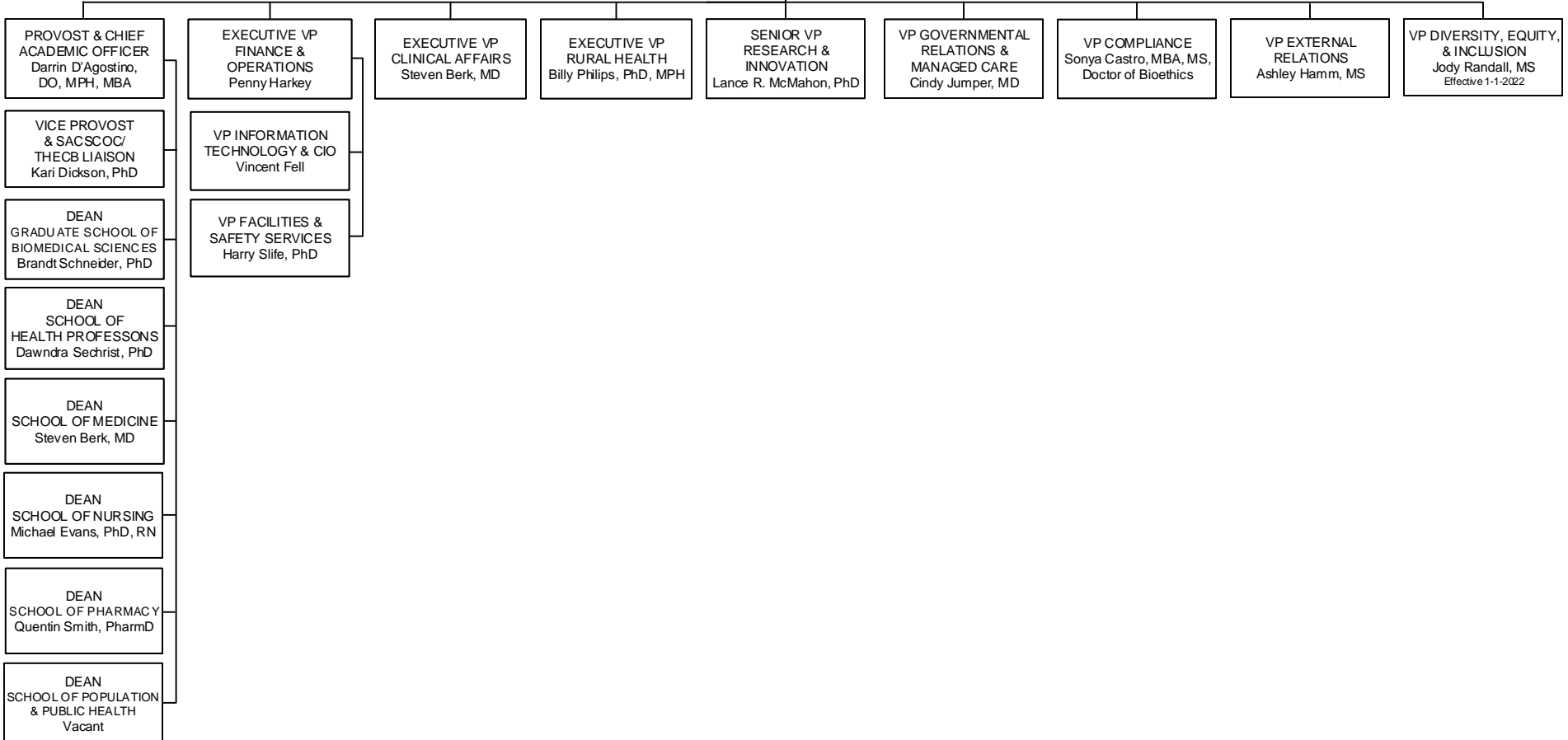
Chief of Staff
 Cole Johnson, JD

Assistant VP
 Presidential F&A
 Mike West

Sr. Director, HSC Strategy
 Justin White, MBA

Sr. Director, Govt. Relations
 Smiley Garcia, MPA

Special Asst. to President
 Bryce Looney, MS



PROVOST & CHIEF ACADEMIC OFFICER
 Darrin D'Agostino, DO, MPH, MBA

EXECUTIVE VP FINANCE & OPERATIONS
 Penny Harkey

EXECUTIVE VP CLINICAL AFFAIRS
 Steven Berk, MD

EXECUTIVE VP RURAL HEALTH
 Billy Philips, PhD, MPH

SENIOR VP RESEARCH & INNOVATION
 Lance R. McMahon, PhD

VP GOVERNMENTAL RELATIONS & MANAGED CARE
 Cindy Jumper, MD

VP COMPLIANCE
 Sonya Castro, MBA, MS, Doctor of Bioethics

VP EXTERNAL RELATIONS
 Ashley Hamm, MS

VP DIVERSITY, EQUITY, & INCLUSION
 Jody Randall, MS
 Effective 1-1-2022

VICE PROVOST & SACSCOC/ THECB LIAISON
 Kari Dickson, PhD

VP INFORMATION TECHNOLOGY & CIO
 Vincent Fell

DEAN GRADUATE SCHOOL OF BIOMEDICAL SCIENCES
 Brandt Schneider, PhD

VP FACILITIES & SAFETY SERVICES
 Harry Slife, PhD

DEAN SCHOOL OF HEALTH PROFESSIONS
 Dawndra Sechrist, PhD

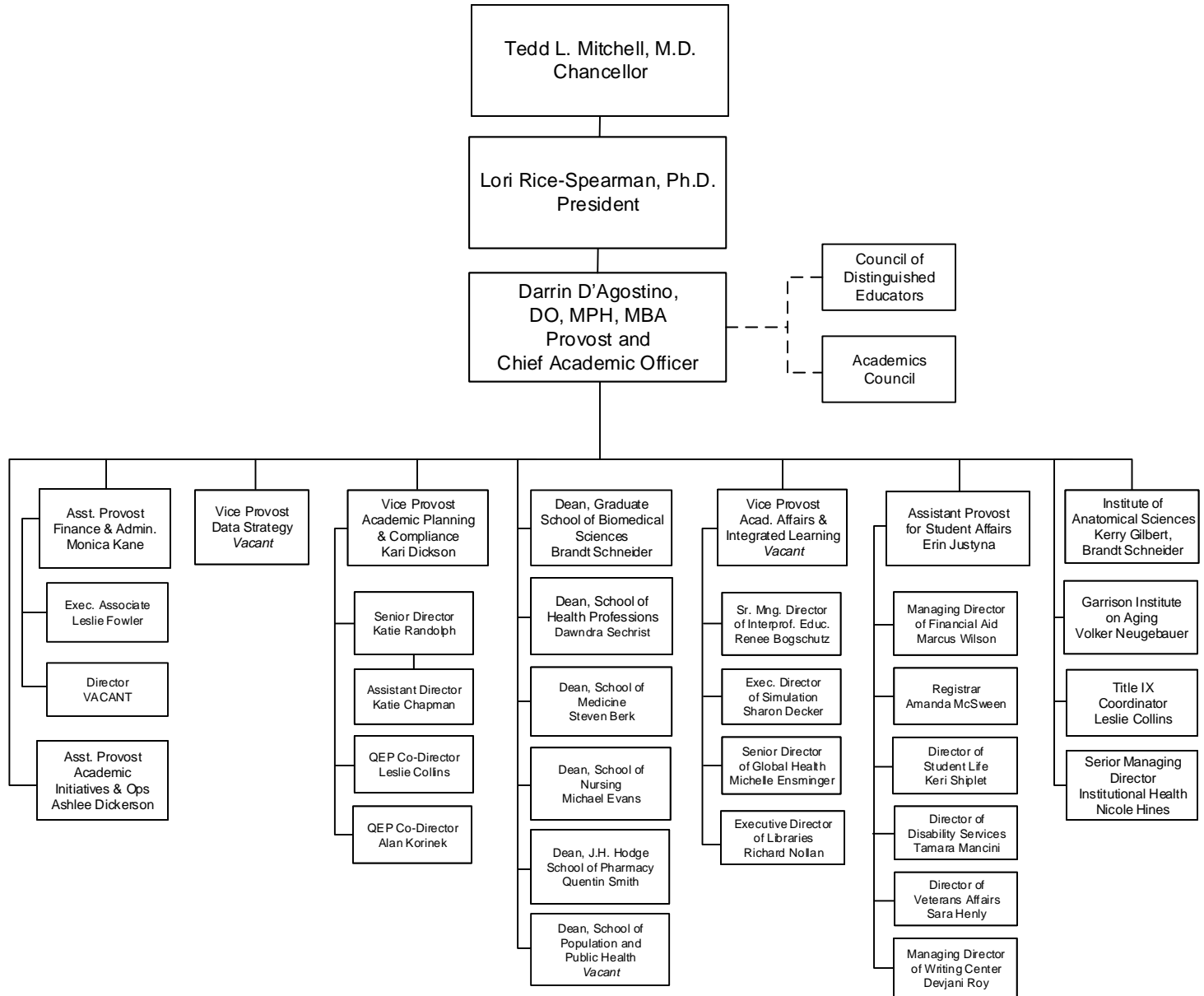
DEAN SCHOOL OF MEDICINE
 Steven Berk, MD

DEAN SCHOOL OF NURSING
 Michael Evans, PhD, RN

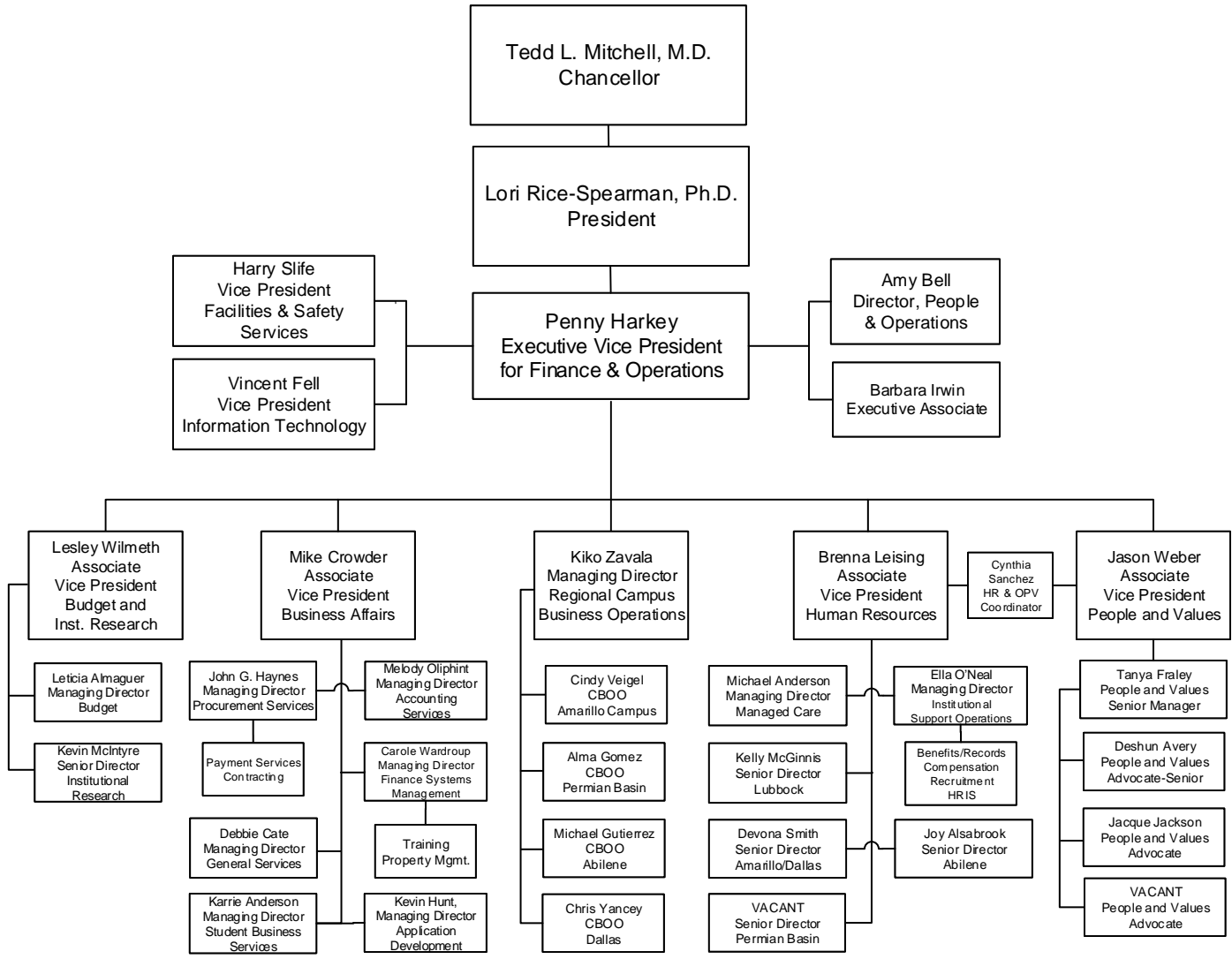
DEAN SCHOOL OF PHARMACY
 Quentin Smith, PharmD

DEAN SCHOOL OF POPULATION & PUBLIC HEALTH
 Vacant

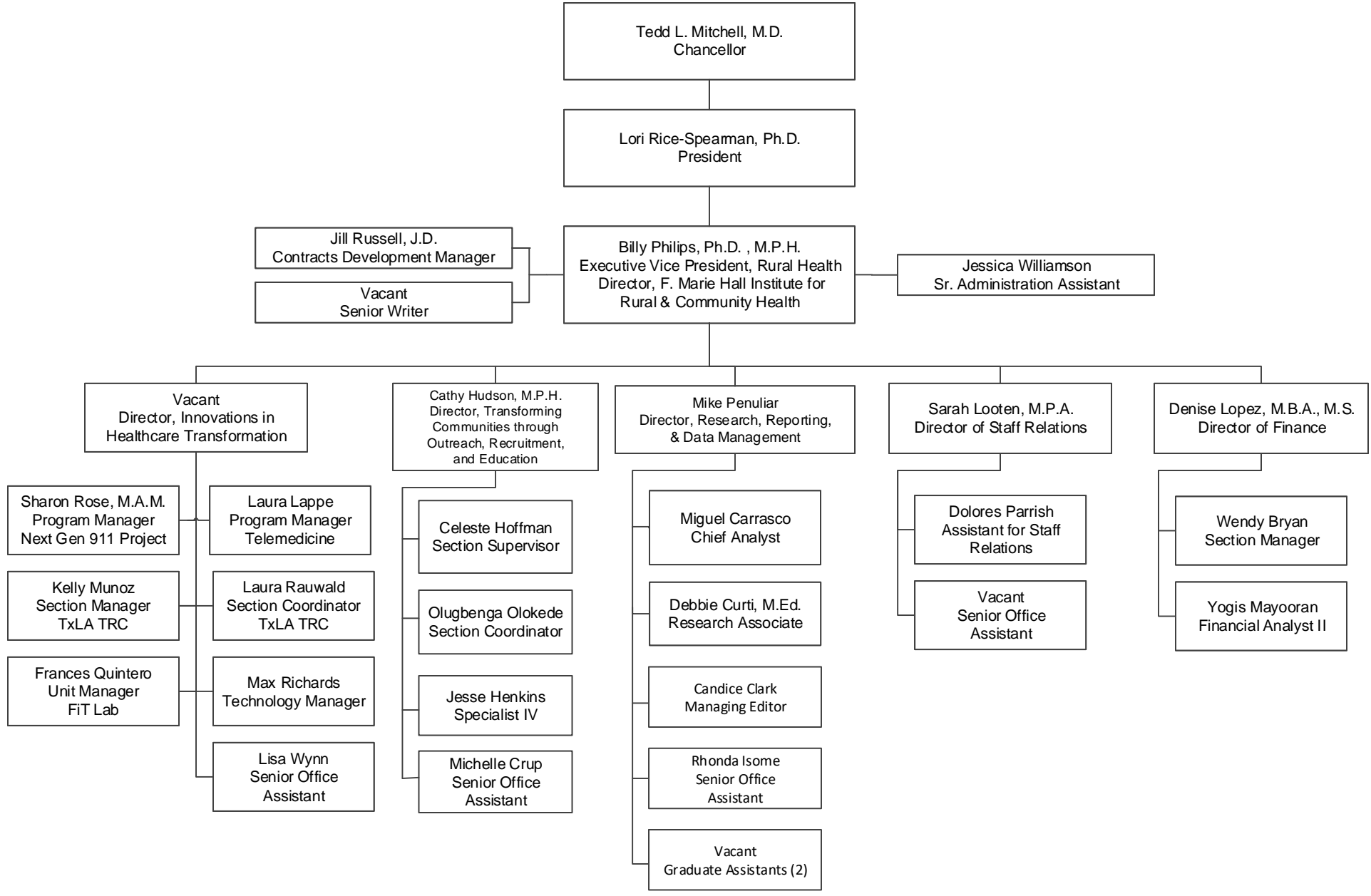
TEXAS TECH UNIVERSITY HEALTH SCIENCES CENTER
 Office of the Provost
 Organizational Chart
 December, 2021



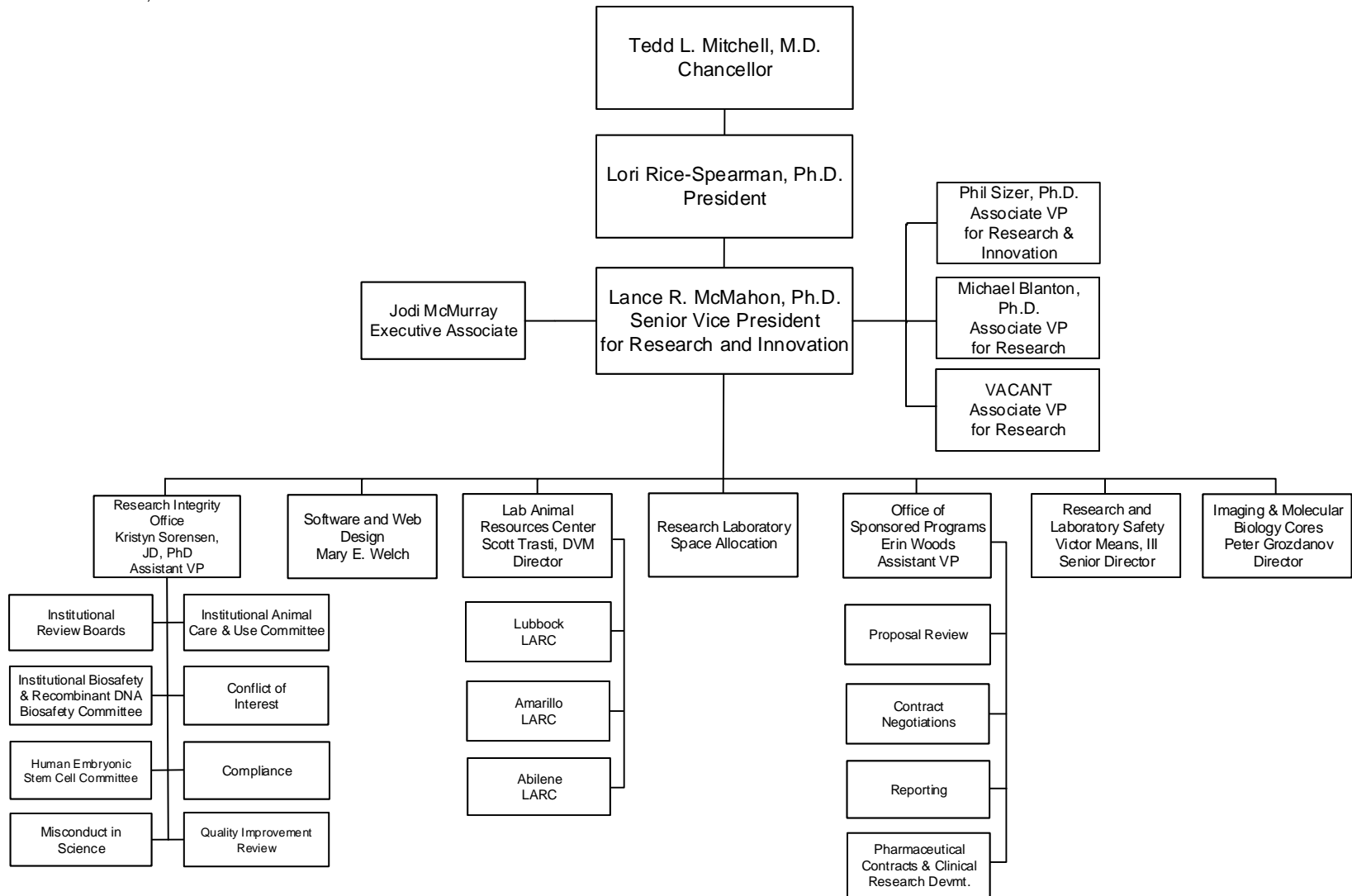
TEXAS TECH UNIVERSITY HEALTH SCIENCES CENTER
 Executive Vice President for Finance & Operations
 Organizational Chart
 December, 2021



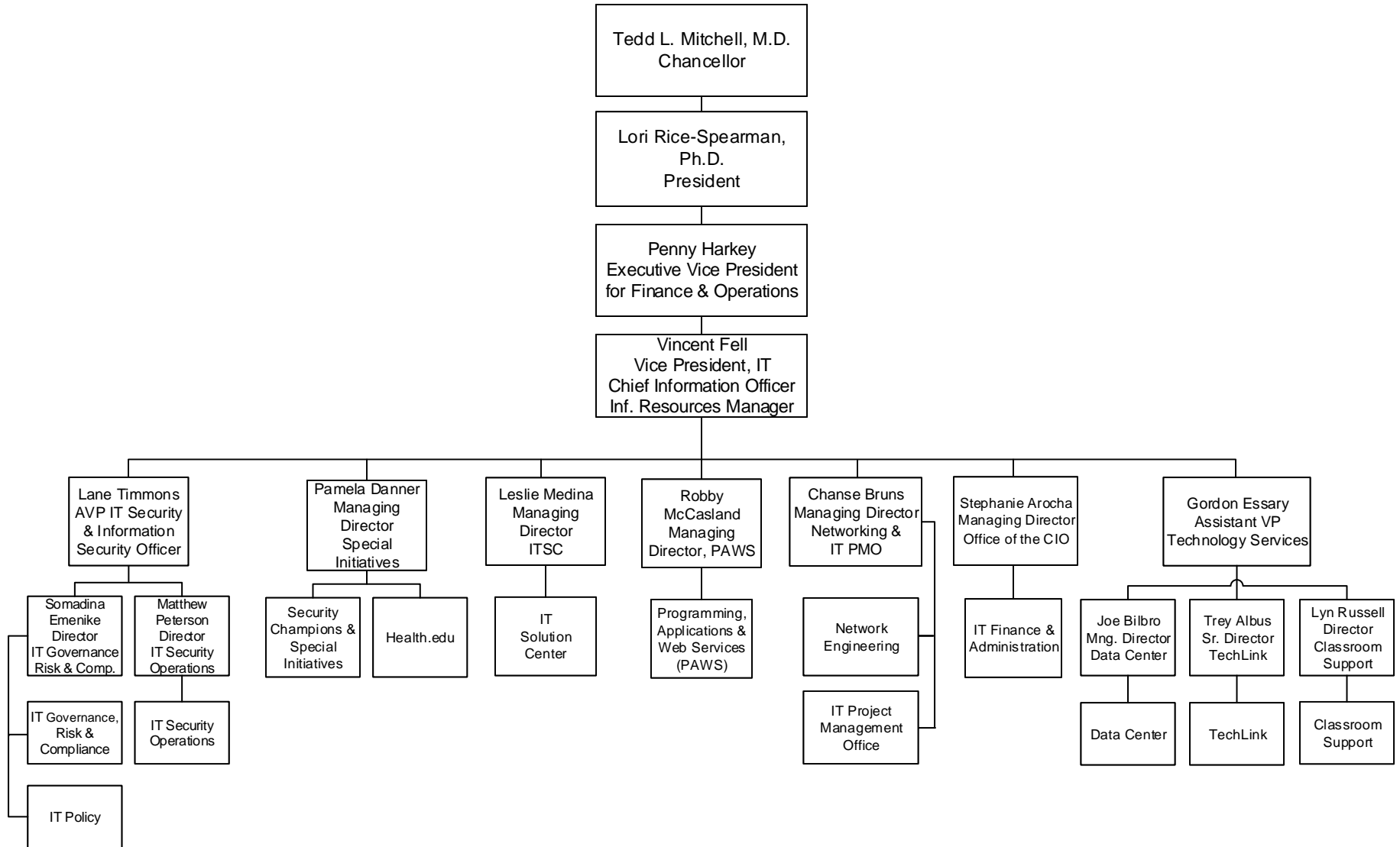
TEXAS TECH UNIVERSITY HEALTH SCIENCES CENTER
 Rural and Community Health
 Organizational Chart
 December 2021



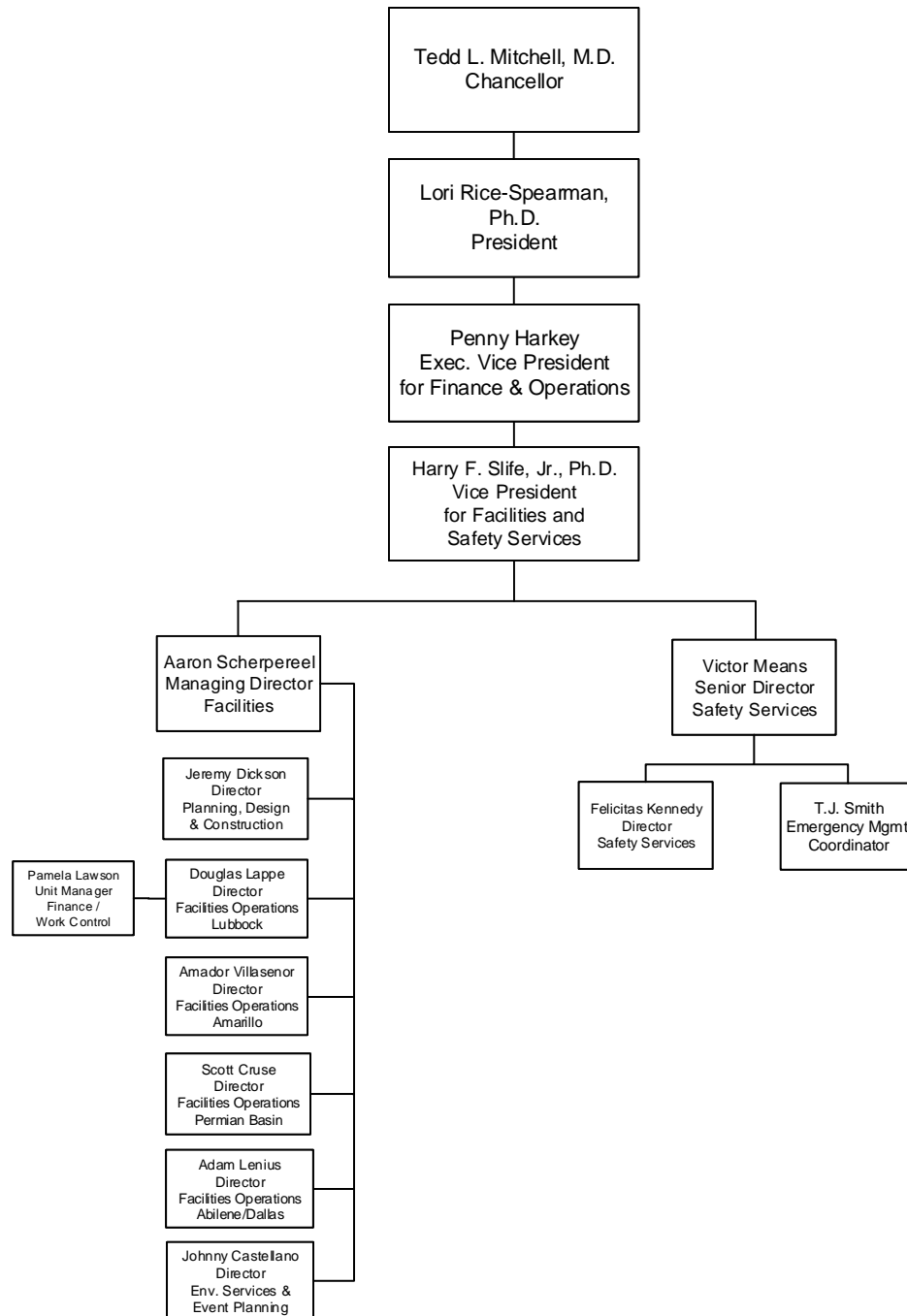
TEXAS TECH UNIVERSITY HEALTH SCIENCES CENTER
 Research
 Organizational Chart
 December, 2021



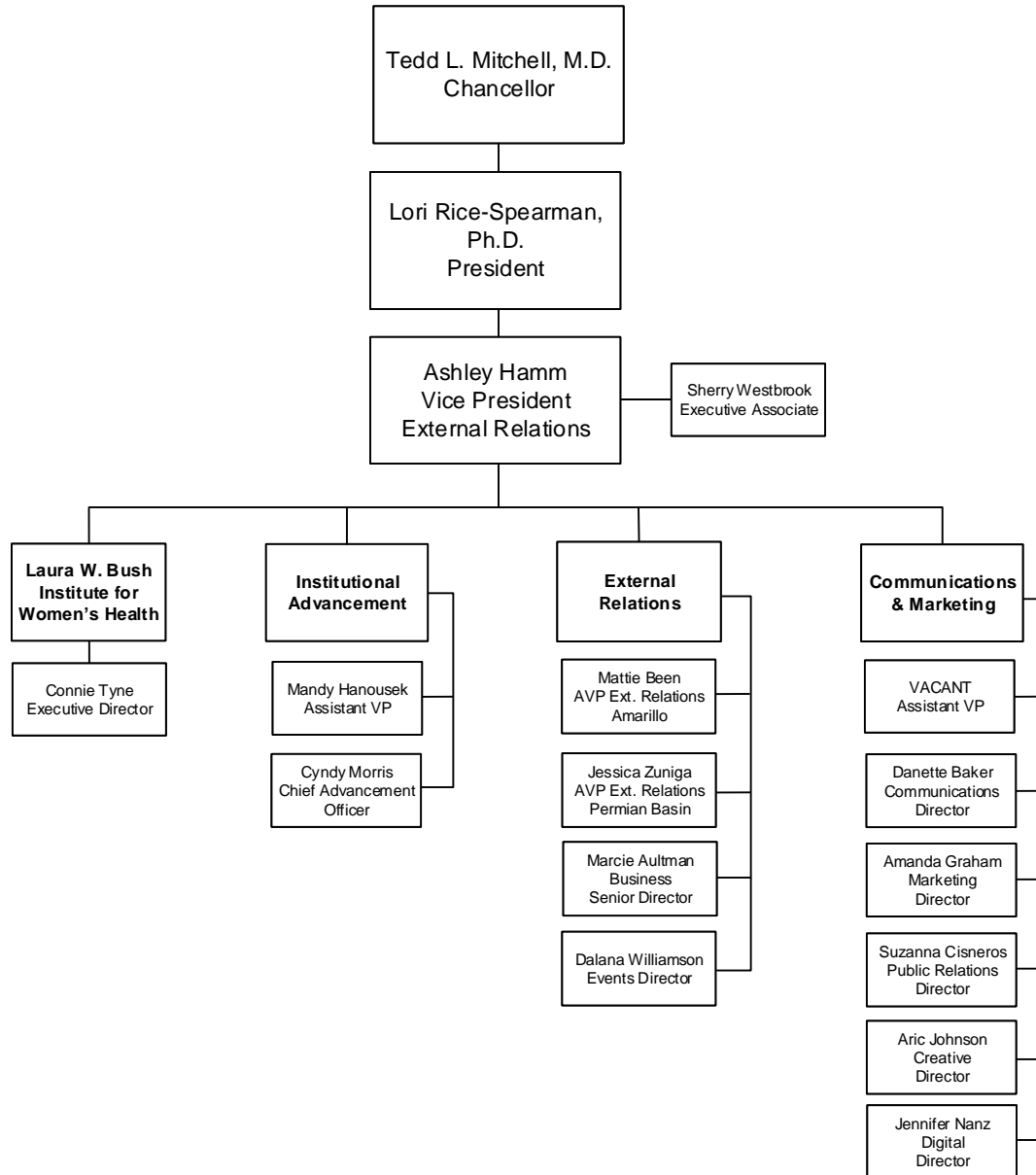
TEXAS TECH UNIVERSITY HEALTH SCIENCES CENTER
 Information Technology
 Organizational Chart
 December, 2021



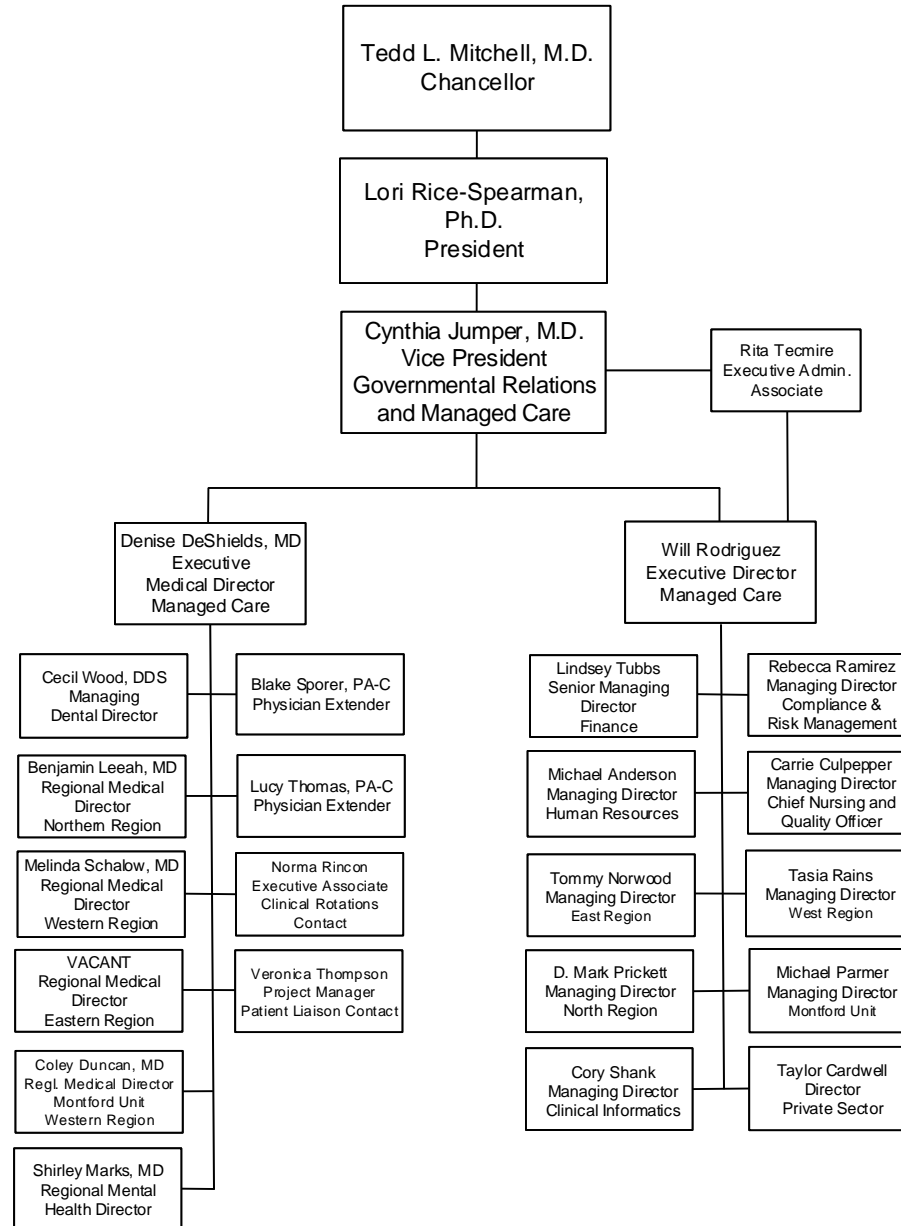
TEXAS TECH UNIVERSITY HEALTH SCIENCES CENTER
Facilities & Safety Services
Organizational Chart
December, 2021



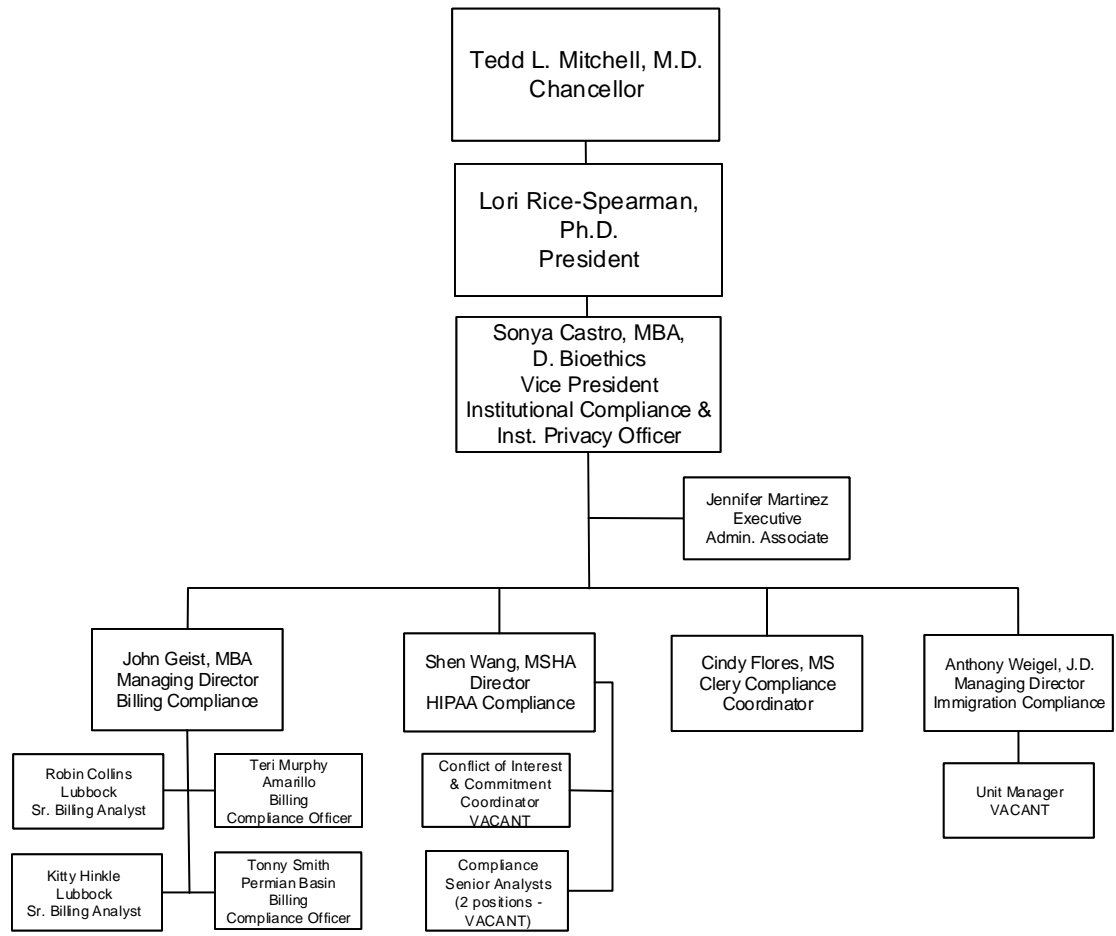
TEXAS TECH UNIVERSITY HEALTH SCIENCES CENTER
 External Relations
 Organizational Chart
 December, 2021



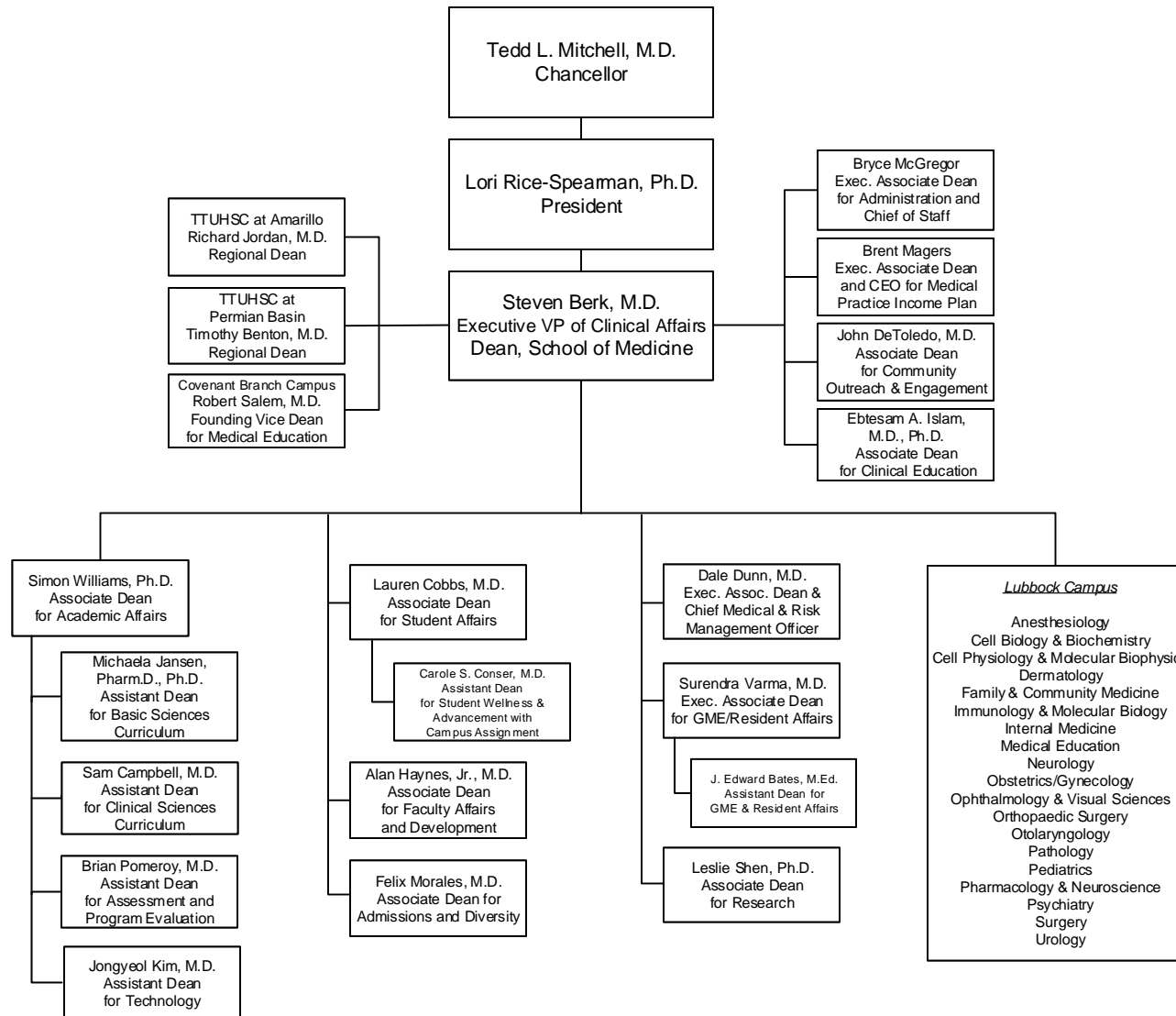
TEXAS TECH UNIVERSITY HEALTH SCIENCES CENTER
 Governmental Relations & Managed Care
 Organizational Chart
 December, 2021



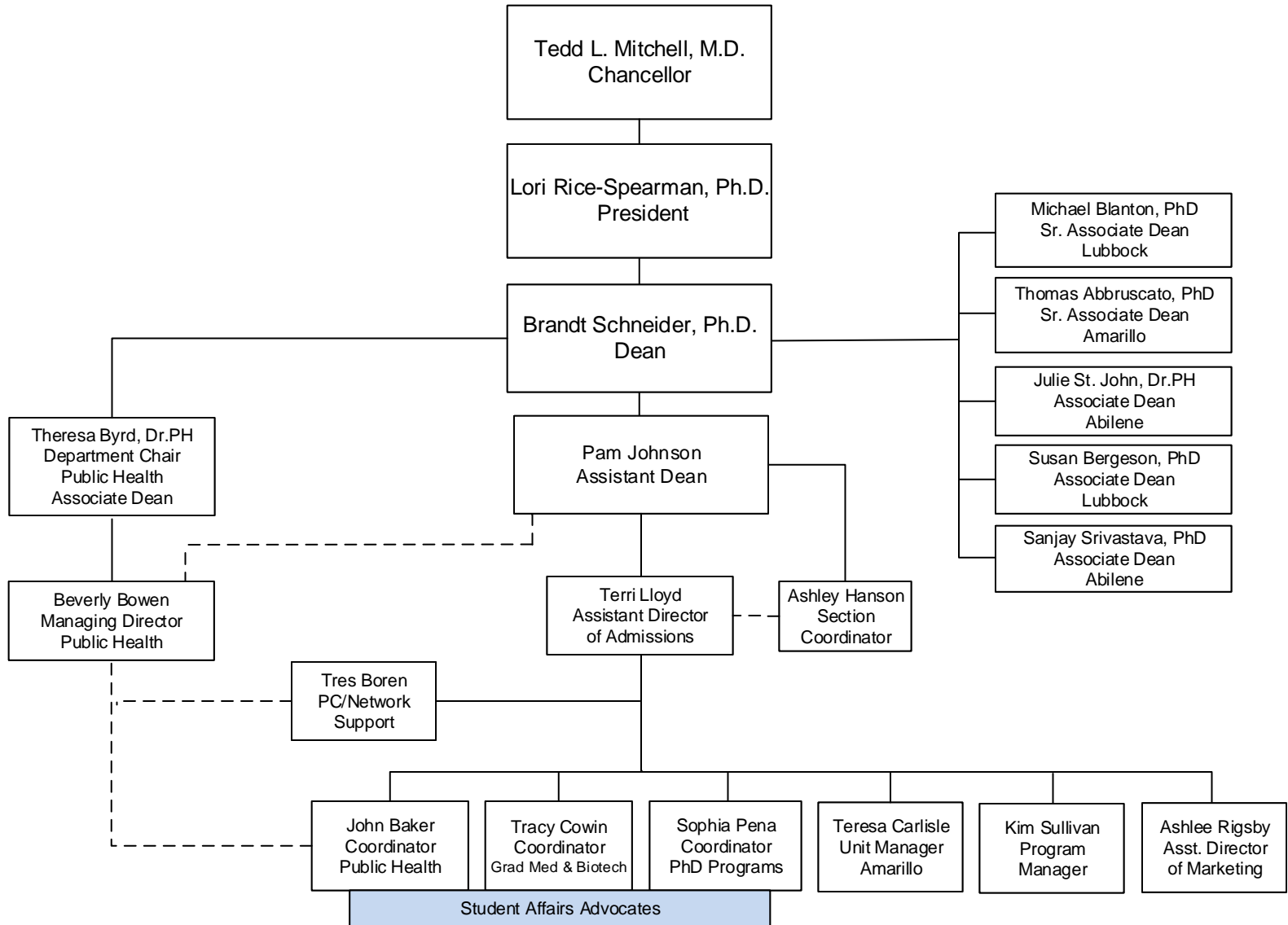
TEXAS TECH UNIVERSITY HEALTH SCIENCES CENTER
 Institutional Compliance
 Organizational Chart
 December, 2021



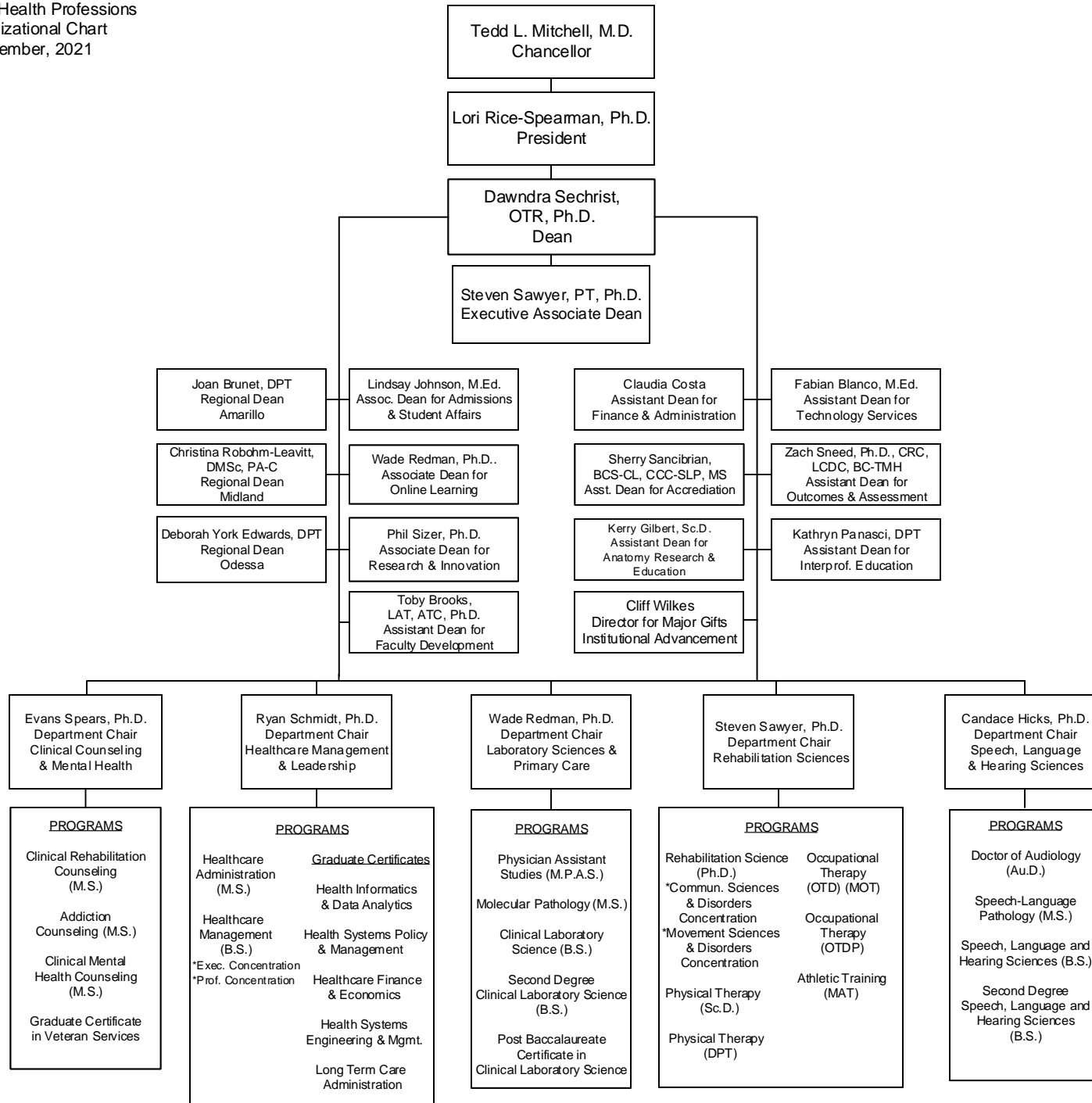
TEXAS TECH UNIVERSITY HEALTH SCIENCES CENTER
 School of Medicine
 Organizational Chart
 December, 2021



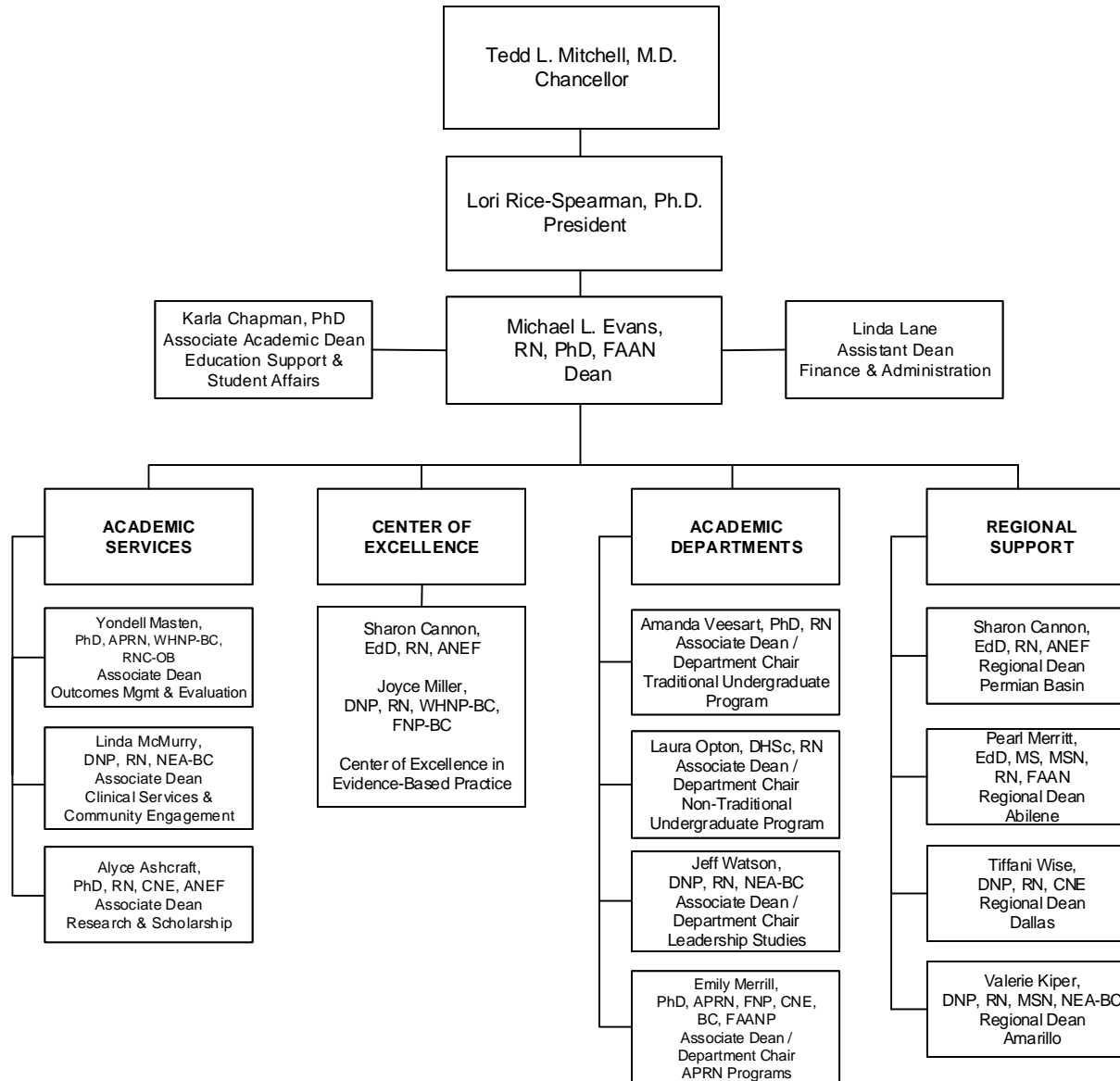
TEXAS TECH UNIVERSITY HEALTH SCIENCES CENTER
 Graduate School of Biomedical Sciences
 Organizational Chart
 December, 2021



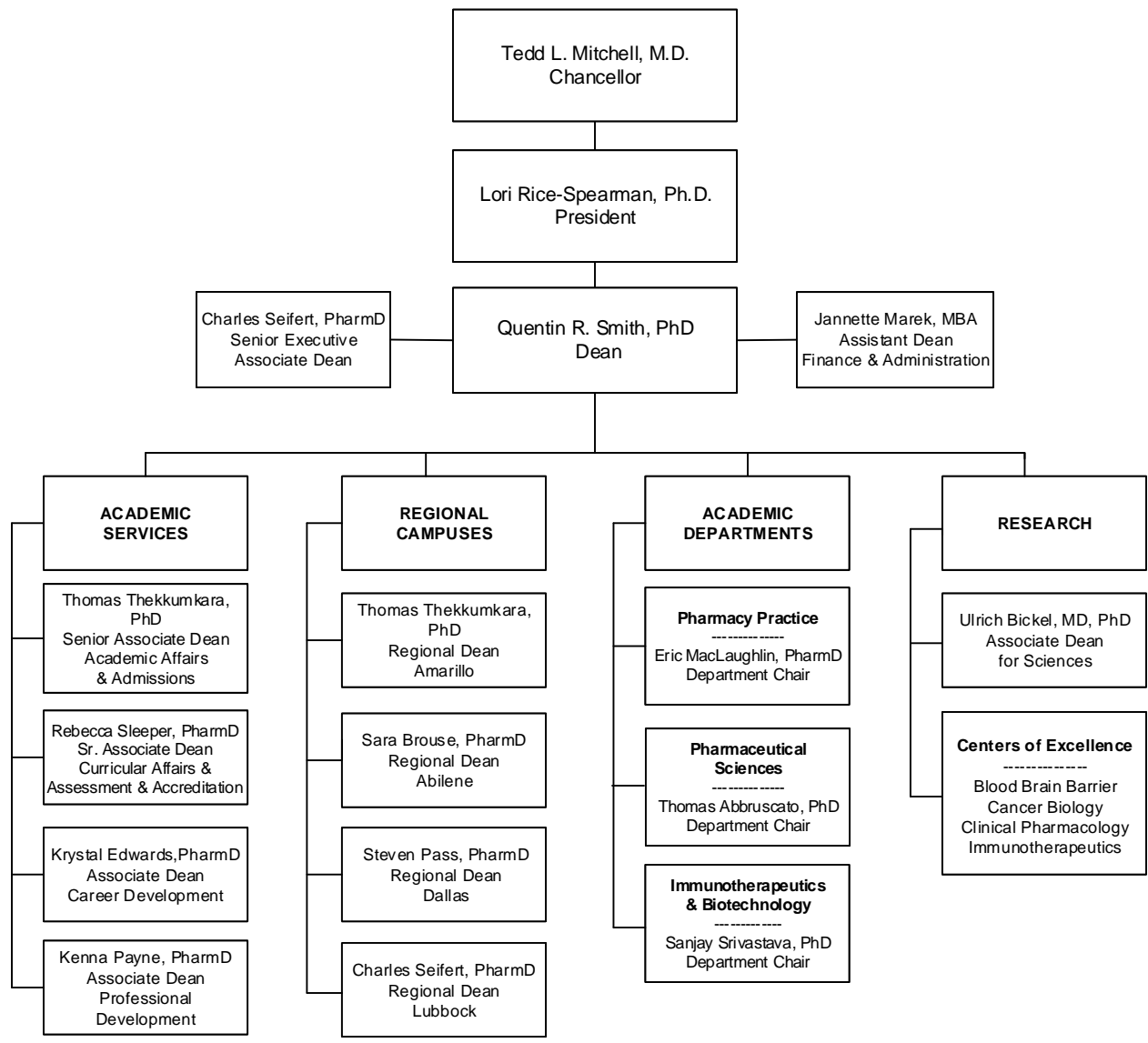
TEXAS TECH UNIVERSITY HEALTH SCIENCES CENTER
 School of Health Professions
 Organizational Chart
 December, 2021



TEXAS TECH UNIVERSITY HEALTH SCIENCES CENTER
 School of Nursing
 Organizational Chart
 December, 2021



TEXAS TECH UNIVERSITY HEALTH SCIENCES CENTER
 Jerry H. Hodge School of Pharmacy
 Organizational Chart
 December, 2021



PROGRAMS

TEXAS TECH UNIVERSITY HEALTH SCIENCES CENTER

Certificate and Degree Programs by Campus^a

	Graduate School of Biomedical Sciences	School of Health Professions	School of Medicine	School of Nursing	School of Pharmacy	School of Population & Public Health ^d
Abilene	Grad. Cert. in Public Health Master of Public Health MS, Biotechnology PhD, Pharmaceutical Sciences			BS, Nursing	Doctor of Pharmacy	
Amarillo	MS, Pharmaceutical Sciences PhD, Pharmaceutical Sciences	Doctor of Physical Therapy	Doctor of Medicine Doctor of Medicine (FMAT)		Doctor of Pharmacy	
Covenant Health System (Lubbock)^b			Doctor of Medicine Doctor of Medicine (FMAT)			
Dallas					Doctor of Pharmacy	
Lubbock	Grad. Cert. in Public Health Master of Public Health MS, Biomedical Sciences ^c MS, Biotechnology MS, Graduate Medical Education Sciences PhD, Biomedical Sciences ^c	BS, Clinical Laboratory Science BS, Speech, Language and Hearing Sciences BS, Speech, Lang. & Hearing Sci. (Sec. Deg.) Master of Athletic Training Master of Occupational Therapy MS, Molecular Pathology MS, Speech-Language Pathology Doctor of Audiology Doctor of Occupational Therapy PhD, Rehabilitation Science Doctor of Physical Therapy	Doctor of Medicine Doctor of Medicine (FMAT)	BS, Nursing	Doctor of Pharmacy	
Mansfield^e				BS, Nursing		
Midland		Master of Physician Assistant Studies				
Odessa		Doctor of Physical Therapy	Doctor of Medicine Doctor of Medicine (FMAT)	BS, Nursing		
Distance Education	Grad. Cert. in Public Health (Online) Master of Public Health (Accelerated) Master of Public Health (Online)	Post-Bacc. Cert. in Clinical Lab. Science BS, Clinical Laboratory Science (Sec. Deg.) BS, Healthcare Management MS, Clinical Rehabilitation Counseling MS, Addiction Counseling MS, Clinical Mental Health Counseling MS, Healthcare Administration Graduate Certif. in Healthcare Admin. ^c Graduate Certificate in Veteran Services Post-Profess. Doctor of Occupational Therapy Doctor of Science in Physical Therapy		BS, Nursing (RN to BSN) BS, Nursing (Accelerated) MS, Nursing ^c Post-Master's Certificates ^c Doctor of Nursing Practice ^c Interprofessional Grad. Certif. ^c		

^a Table indicates academic programs for which ≥50% of credit hours are offered at the specified location, unless indicated otherwise.

^b Off-campus instructional site at which 25-49% of credit hours are offered.

^c Multiple concentrations available

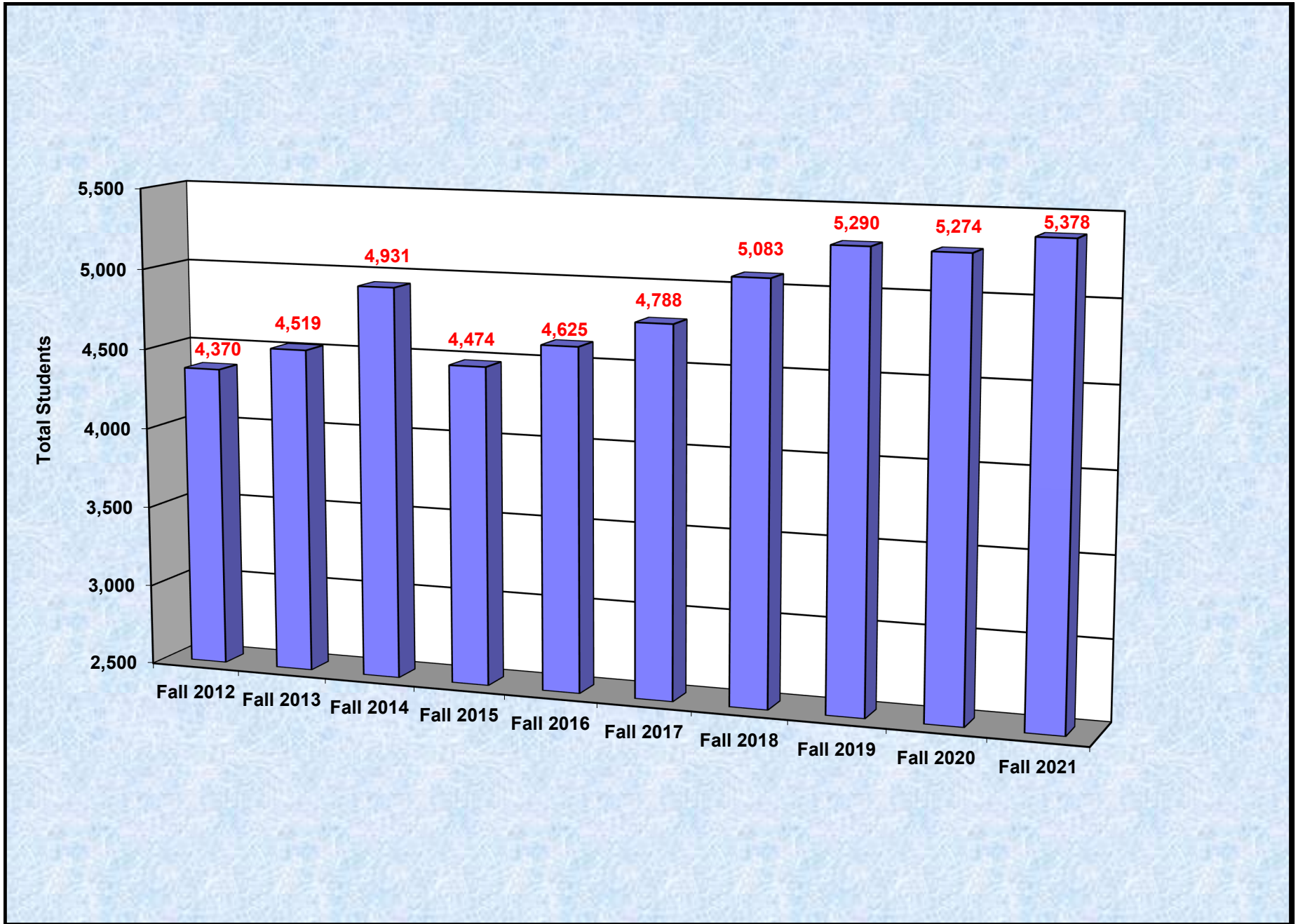
^d Currently under development

^e Off-campus instructional site at which instruction will be offered primarily through electronic-to-group delivery during 2021-2022.

STUDENTS

TTUHSC Enrollment Trends

Fall 2012 - Fall 2021

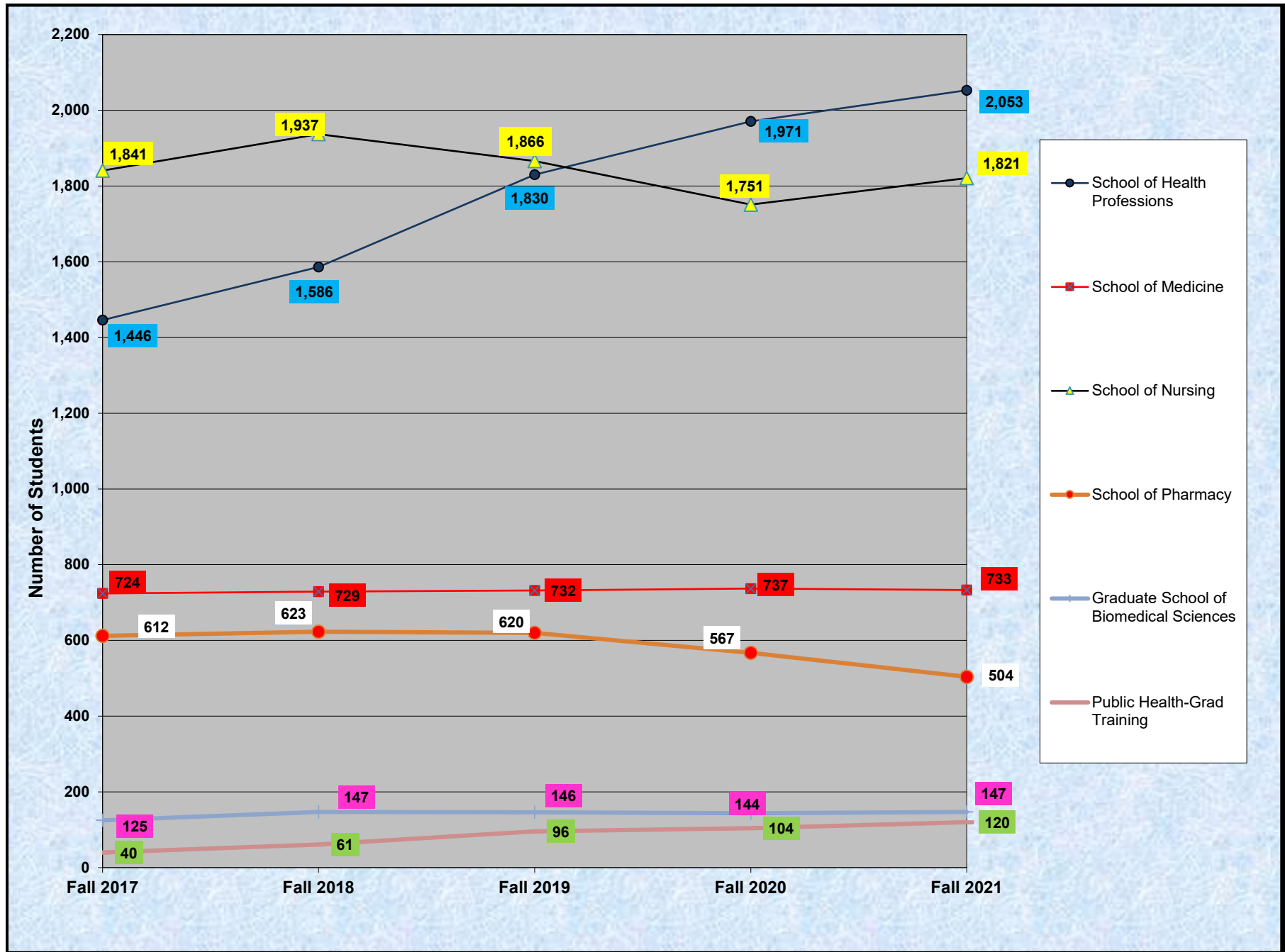


Sources:
TTUHSC Office of the Registrar
TTUHSC Office of Institutional Research

El Paso schools are excluded beginning Fall 2015.

TTUHSC Enrollment Trends by School

Fall 2017 - Fall 2021



Sources:
 TTUHSC Office of the Registrar
 TTUHSC Office of Institutional Research

**TEXAS TECH UNIVERSITY HEALTH SCIENCES CENTER
ENROLLMENT BY CAMPUS / BY SCHOOL**

Lubbock	Fall 2017	Fall 2018	Fall 2019	Fall 2020	Fall 2021
Graduate School of Biomedical Sciences	107	114	120	123	125
School of Health Professions	642	644	655	663	684
School of Medicine	567	579	571	578	578
School of Nursing	321	314	314	315	303
School of Pharmacy	36	37	36	34	27
TOTAL Lubbock	1,673	1,688	1,696	1,713	1,717
Amarillo	Fall 2017	Fall 2018	Fall 2019	Fall 2020	Fall 2021
Graduate School of Biomedical Sciences	44	44	42	29	25
School of Health Professions	51	52	56	52	52
School of Medicine	108	102	111	110	114
School of Pharmacy	289	260	200	167	130
TOTAL Amarillo	492	458	409	358	321
Midland/Odessa	Fall 2017	Fall 2018	Fall 2019	Fall 2020	Fall 2021
School of Health Professions	162	165	162	159	163
School of Medicine	49	48	50	49	41
School of Nursing	43	47	48	51	60
TOTAL Midland/Odessa	254	260	260	259	264
El Paso	Fall 2017	Fall 2018	Fall 2019	Fall 2020	Fall 2021
Graduate School of Biomedical Sciences	1	-	-	-	-
TOTAL El Paso	1	-	-	-	-
Dallas	Fall 2017	Fall 2018	Fall 2019	Fall 2020	Fall 2021
School of Pharmacy	142	188	243	236	241
TOTAL Dallas	142	188	243	236	241
Abilene	Fall 2017	Fall 2018	Fall 2019	Fall 2020	Fall 2021
Graduate School of Biomedical Sciences	13	30	39	29	30
School of Nursing	141	164	187	189	176
School of Pharmacy	145	138	141	130	106
TOTAL Abilene	299	332	367	348	312
Distance Education	Fall 2017	Fall 2018	Fall 2019	Fall 2020	Fall 2021
Graduate School of Biomedical Sciences	-	20	41	67	87
School of Health Professions	591	725	957	1,097	1,154
School of Nursing	1,336	1,412	1,317	1,196	1,282
TOTAL Distance Education	1,927	2,157	2,315	2,360	2,523
TTUHSC Fall Semester Totals	4,788	5,083	5,290	5,274	5,378

**TEXAS TECH UNIVERSITY HEALTH SCIENCES CENTER
ENROLLMENT BY SCHOOL / BY CAMPUS**

Graduate School of Biomedical Sciences	Fall 2017	Fall 2018	Fall 2019	Fall 2020	Fall 2021
Abilene	13	30	39	29	30
Amarillo	44	44	42	29	25
El Paso	1	-	-	-	-
Lubbock	107	114	120	123	125
Distance Education	-	20	41	67	87
TOTAL GSBS	165	208	242	248	267

School of Health Professions	Fall 2017	Fall 2018	Fall 2019	Fall 2020	Fall 2021
Amarillo	51	52	56	52	52
Lubbock	642	644	655	663	684
Midland	113	115	111	112	116
Odessa	49	50	51	47	47
Distance Education	591	725	957	1,097	1,154
TOTAL SHP	1,446	1,586	1,830	1,971	2,053

School of Medicine	Fall 2017	Fall 2018	Fall 2019	Fall 2020	Fall 2021
Amarillo	108	102	111	110	114
Lubbock	567	579	571	578	578
Odessa	49	48	50	49	41
TOTAL SOM	724	729	732	737	733

School of Nursing	Fall 2017	Fall 2018	Fall 2019	Fall 2020	Fall 2021
Abilene	141	164	187	189	176
Lubbock	321	314	314	315	303
Odessa	43	47	48	51	60
Distance Education	1,336	1,412	1,317	1,196	1,282
TOTAL SON	1,841	1,937	1,866	1,751	1,821

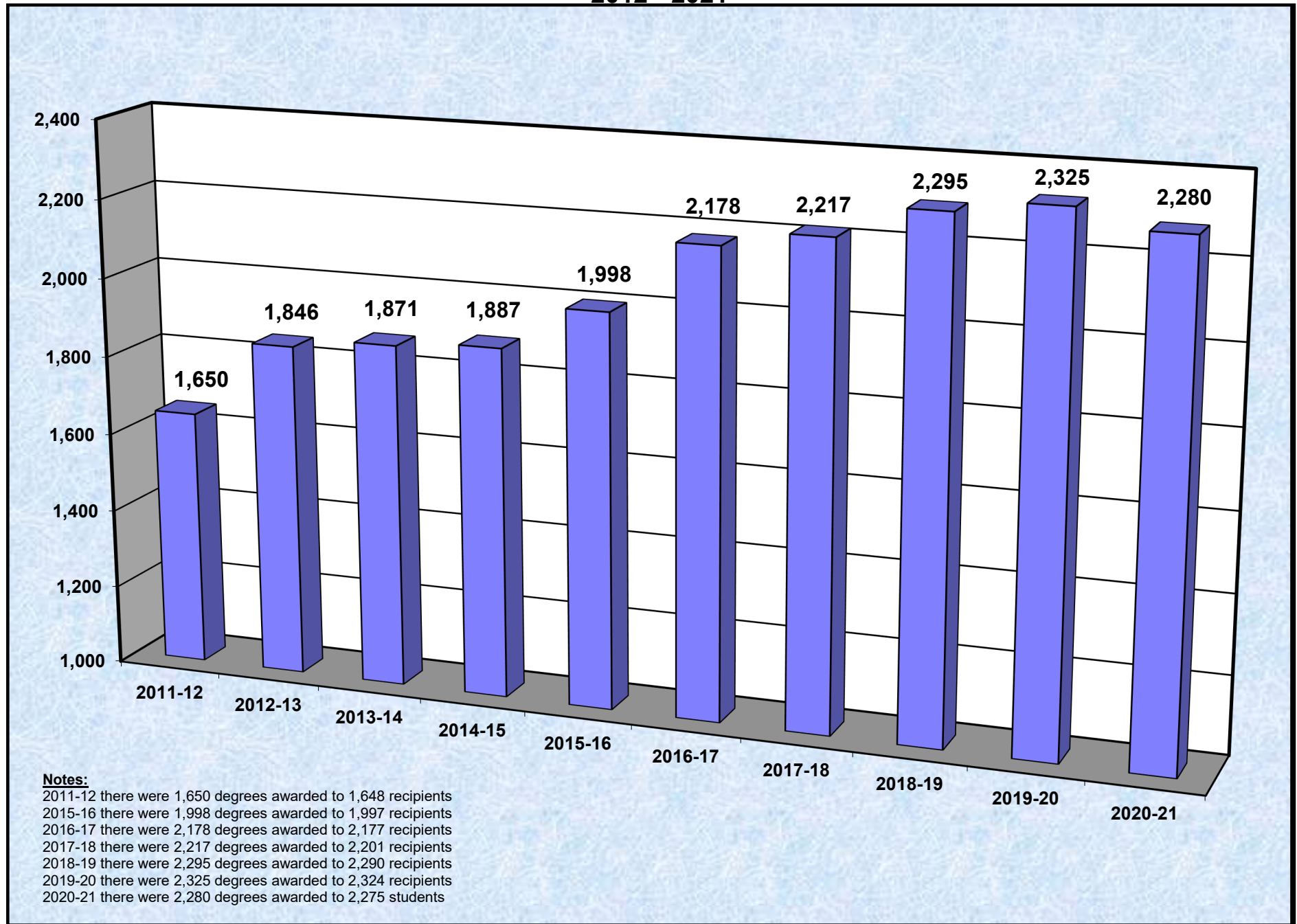
School of Pharmacy	Fall 2017	Fall 2018	Fall 2019	Fall 2020	Fall 2021
Abilene	145	138	141	130	106
Amarillo	289	260	200	167	130
Dallas	142	188	243	236	241
Lubbock	36	37	36	34	27
TOTAL SOP	612	623	620	567	504

TOTAL TTUHSC	4,788	5,083	5,290	5,274	5,378
---------------------	--------------	--------------	--------------	--------------	--------------

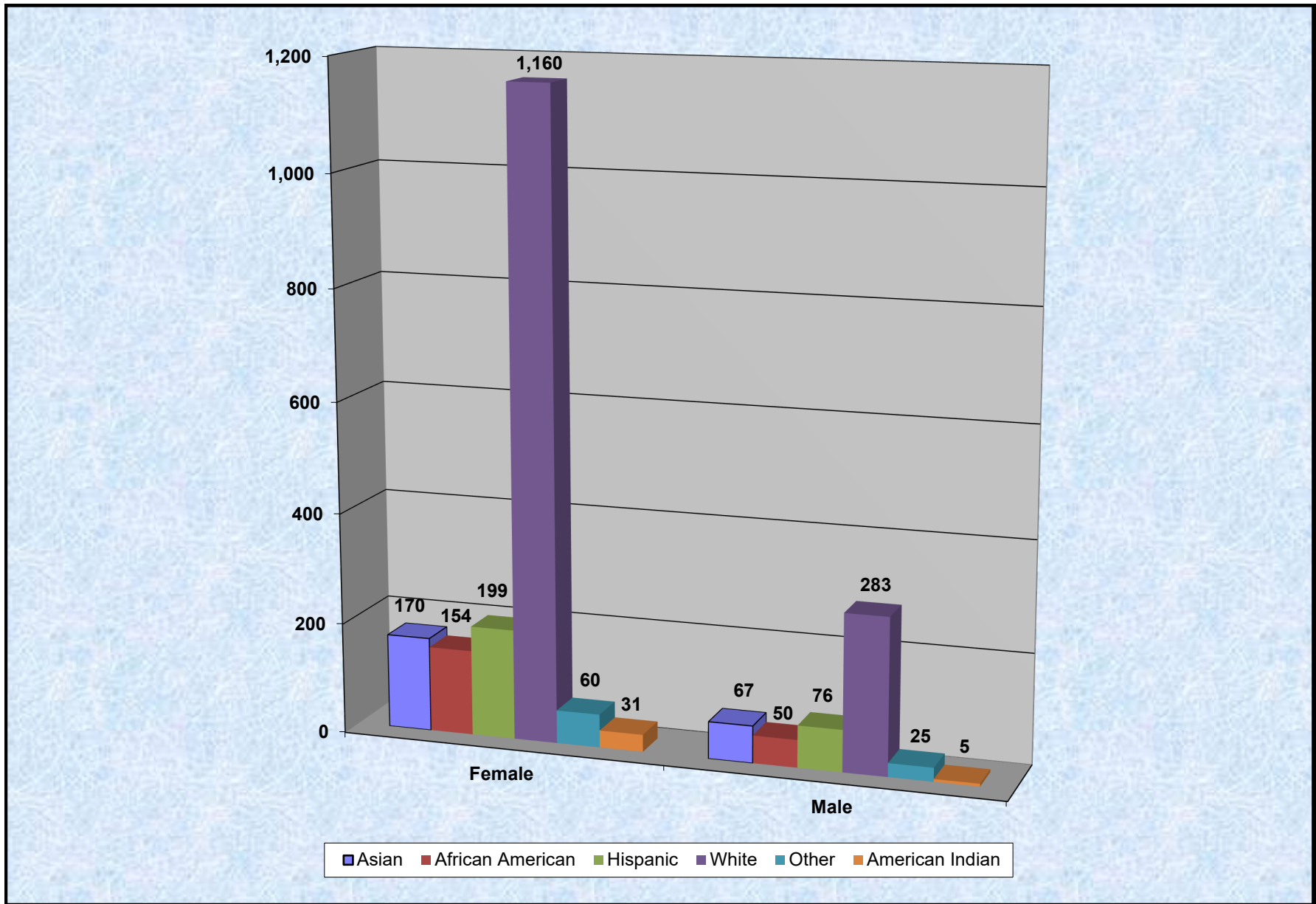
**TEXAS TECH UNIVERSITY HEALTH SCIENCES CENTER
ENROLLMENT BY ETHNICITY/GENDER BY SCHOOL**

	2017		2018		2019		2020		2021	
	M	F	M	F	M	F	M	F	M	F
GSBS										
African American	3	9	6	5	4	6	6	15	8	14
American Indian	0	0	0	2	0	2	0	2	1	2
Asian	31	19	8	7	8	8	9	9	8	13
Hispanic	15	10	23	21	18	21	15	32	11	53
Non-Resident Alien	3	1	27	23	29	35	23	32	18	35
Other	0	8	1	3	1	3	1	2	1	3
White	33	33	35	47	45	62	45	57	42	58
TOTAL GSBS	85	80	100	108	105	137	99	149	89	178
School of Medicine	M	F	M	F	M	F	M	F	M	F
African American	14	11	17	13	20	16	20	26	14	28
American Indian	2	3	3	2	1	2	1	3	0	1
Asian	72	85	60	71	61	62	77	107	84	101
Hispanic	38	48	43	53	43	55	44	59	43	56
Non-Resident Alien	0	0	1	1	1	1	-	0	-	0
Other	88	89	78	102	87	111	27	30	26	28
White	169	105	163	122	141	131	166	177	176	176
TOTAL SOM	383	341	365	364	354	378	335	402	343	390
School of Health Professions	M	F	M	F	M	F	M	F	M	F
African American	40	85	48	100	35	130	41	145	43	142
American Indian	2	4	3	11	5	12	4	16	5	6
Asian	48	77	41	81	46	85	47	98	53	104
Hispanic	90	214	85	271	107	313	123	348	134	415
Non-Resident Alien	0	0	16	18	12	14	6	9	4	11
Other	41	127	6	22	8	28	8	35	6	21
White	178	540	190	694	230	805	217	874	193	916
TOTAL SHP	399	1047	389	1197	443	1387	446	1525	438	1615
School of Nursing	M	F	M	F	M	F	M	F	M	F
African American	15	118	23	141	18	125	26	138	25	135
American Indian	2	17	4	21	4	22	5	23	4	21
Asian	21	67	28	82	25	47	18	76	20	84
Hispanic	49	239	58	311	84	369	73	381	80	430
Non-Resident Alien	0	1	2	5	0	15	0	5	0	5
Other	81	663	11	70	8	57	4	20	3	18
White	70	498	162	1019	140	952	103	879	100	896
TOTAL SON	238	1603	288	1649	279	1587	229	1522	232	1589
School of Pharmacy	M	F	M	F	M	F	M	F	M	F
African American	14	30	25	28	26	37	30	42	28	45
American Indian	1	1	0	1	0	2	1	1	2	0
Asian	98	160	94	138	78	131	76	123	66	100
Hispanic	27	27	28	30	27	29	26	29	25	30
Non-Resident Alien	-	1	5	15	6	15	3	9	2	2
Other	18	22	6	16	7	11	8	6	5	5
White	83	130	98	139	98	153	75	138	67	127
TOTAL SOP	241	371	256	367	242	378	219	348	195	309
TOTAL TTUHSC	1346	3442	1398	3685	1423	3867	1328	3946	1297	4081

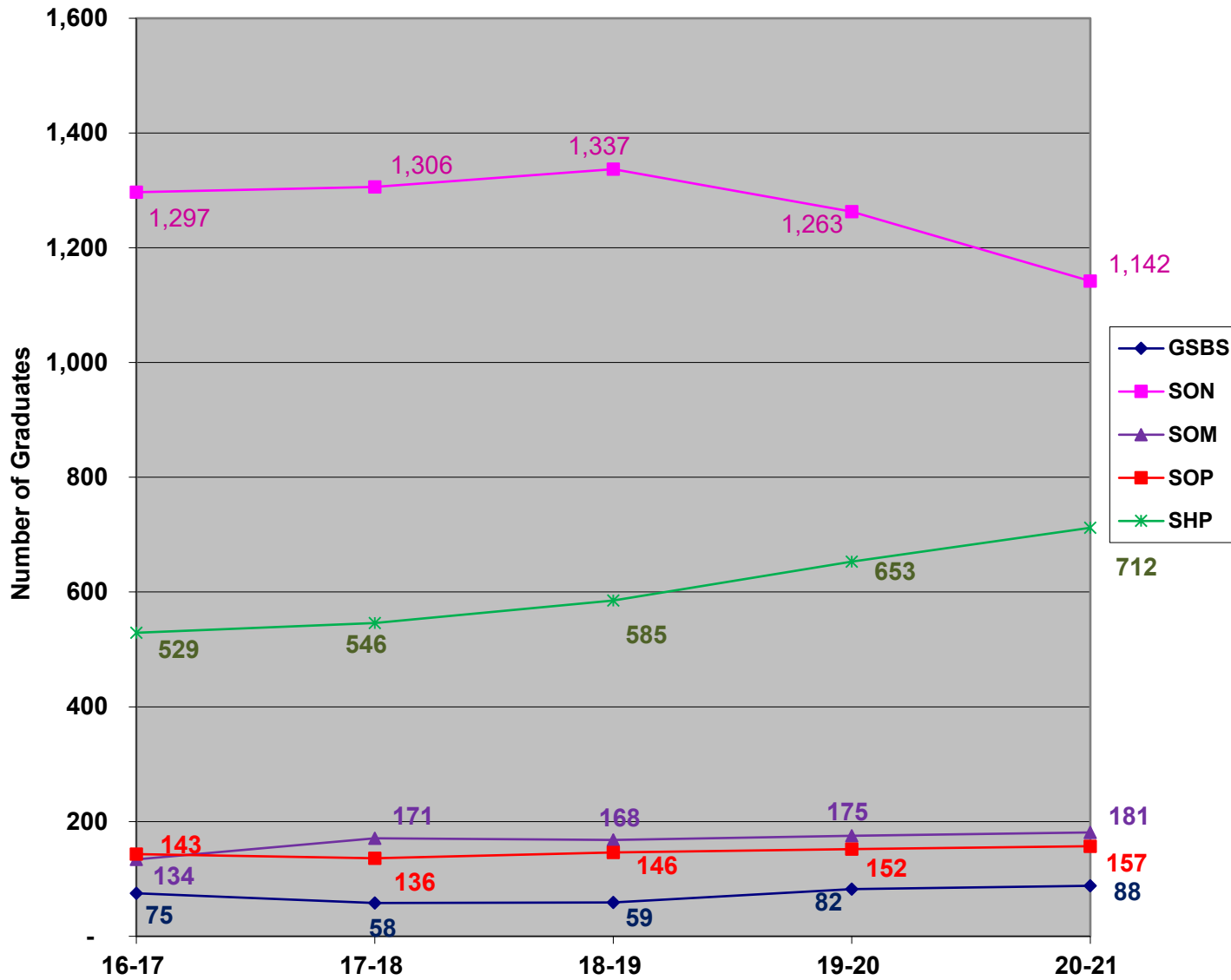
TTUHSC Degrees Awarded by Academic Year 2012 - 2021



TTUHSC Degree Recipients by Sex/Ethnicity 2020 - 2021



TTUHSC Number of Graduates by School 2017-2021



**TEXAS TECH UNIVERSITY HEALTH SCIENCES CENTER
SCHOOL OF MEDICINE GRADUATES FOR THE LAST SEVEN YEARS ENTERING
FAMILY PRACTICE, INTERNAL MEDICINE, PEDIATRIC AND OB/GYN RESIDENCIES
As of September 1st**

RESIDENCIES IN TEXAS							
DESCRIPTION	2015	2016	2017	2018	2019	2020	2021
Total Graduates	133	152	133	163	171	175	181
Primary Care (% of Total Graduates)	47 (35.3%)	51 (33.6%)	40 (30.1%)	52 (31.9%)	42 (24.6%)	44 (25.1%)	60 (33.2%)
Family Medicine	15	24	15	19	16	20	24
Internal Medicine *	16	17	16	15	14	13	23
Pediatrics	11	7	8	11	8	7	10
Med/Pediatrics	0	0	0	0	0	0	0
Ob/Gyn	5	3	1	7	4	4	3

RESIDENCIES IN AND OUT OF TEXAS							
DESCRIPTION	2015	2016	2017	2018	2019	2020	2021
Total Graduates	133	152	133	163	171	175	181
Primary Care (% of Total Graduates)	71 (53.4%)	85 (55.9%)	69 (51.9%)	81 (49.7%)	81 (47.4%)	88 (50.3%)	99 (54.7%)
Family Medicine	20	29	16	22	26	30	33
Internal Medicine *	20	36	28	24	21	32	37
Pediatrics	20	15	18	19	22	15	20
Med/Pediatrics	1	0	4	1	1	3	0
Ob/Gyn	10	5	3	15	11	8	9

* The count of graduates entering Internal Medicine includes only categorical Internal Medicine residencies. Students entering preliminary Internal Medicine positions are excluded.

**TEXAS TECH UNIVERSITY HEALTH SCIENCES CENTER (TTUHSC)
STATE BOARD PASS RATES FOR FIRST TIME CANDIDATES**

**SCHOOL OF HEALTH PROFESSIONS (SHP)
CLINICAL LABORATORY SCIENCE**

YEAR	PASS RATE	NATIONAL MEAN
2012	94%	86%
2013	86%	78%
2014	91%	79%
2015	78%	80%
2016	84%	81%
2017	100%	81.5%
2018	81.2%	81.4%
2019	75%	84%
2020	73.7%	82%
2021	71.4%	77.1%

SHP - CLINICAL LABORATORY SCIENCE - ONLINE

YEAR	PASS RATE	NATIONAL MEAN
2012	88%	86%
2013	97%	81%
2014	89%	78%
2015	90%	84%
2016	97%	78%
2017	80%	80.6%
2018	92.1%	74.9%
2019	100%	77.5%
2020	78.2%	78%
2021	89.6%	80.5%

TTUHSC STATE BOARD PASS RATES FOR FIRST TIME CANDIDATES

SHP - OCCUPATIONAL THERAPY

<i>YEAR</i>	<i>PASS RATE</i>	<i>NATIONAL MEAN</i>
2012	88%	85%
2013	100%	84%
2014	97%	86%
2015	97%	87%
2016	97%	82%
2017	82.69%	82%
2018	93.88%	82%
2019	91.67%	81%
2020	91.49%	84%
2021	96.08%	N/A *

* National Mean average for all scores reported not available for 2021.

SHP - PHYSICAL THERAPY

<i>YEAR</i>	<i>PASS RATE</i>	<i>NATIONAL MEAN</i>
2012	88%	-
2013	93%	91%
2014	93%	93%
2015	93%	91%
2016	97%	94%
2017	100%	94%
2018	100%	92.7%
2019	96.9%	91.4%
2020	95.7%	93.1%
2021	95.2%	90.5%

TTUHSC STATE BOARD PASS RATES FOR FIRST TIME CANDIDATES

SHP - SPEECH-LANGUAGE PATHOLOGY

<i>YEAR</i>	<i>PASS RATE</i>	<i>NATIONAL MEAN</i>
2012	100%	86%
2013	100%	90%
2014	100%	89%
2015	100%	84%
2016	100%	82%
2017	100%	82.4%
2018	100%	91.2%
2019	100%	82%
2020	100%	82%
2021	100%	N/A *

SHP - AUDIOLOGY

<i>YEAR</i>	<i>PASS RATE</i>	<i>NATIONAL MEAN</i>
2012	56%	56%
2013	57%	58%
2014	82%	63%
2015	89%	70%
2016	80%	69.7%
2017	68.75%	69.9%
2018	100%	82.1%
2019	90%	81.6%
2020	55.56%	81.6%
2021	90%	N/A *

* National Mean average for all scores reported not available for 2021.

TTUHSC STATE BOARD PASS RATES FOR FIRST TIME CANDIDATES

SHP - PHYSICIAN ASSISTANT PROGRAM

<i>YEAR</i>	<i>PASS RATE</i>	<i>NATIONAL MEAN</i>
2012	90%	93%
2013	93%	93%
2014	98%	95%
2015	98%	95%
2016	98%	96%
2017	100%	97%
2018	96%	98%
2019	98.2%	93%
2020	90.5%	95%
2021	91.2%	95%

SHP - MOLECULAR PATHOLOGY PROGRAM

<i>YEAR</i>	<i>PASS RATE</i>	<i>NATIONAL MEAN</i>
2012	94%	73%
2013	100%	81%
2014	100%	82%
2015	100%	86%
2016	100%	86%
2017	95%	77%
2018	100%	77.6%
2019	100%	77.5%
2020	91.3%	80%
2021	92%	69.6%

TTUHSC STATE BOARD PASS RATES FOR FIRST TIME CANDIDATES

SHP - ATHLETIC TRAINING PROGRAM

<i>YEAR</i>	<i>PASS RATE</i>	<i>NATIONAL MEAN</i>
2012	100%	81%
2013	100%	82%
2014	100%	80%
2015	100%	83%
2016	96%	84%
2017	96%	81%
2018	86%	73%
2019	87%	81%
2020	86.9%	81%
2021	95%	N/A *

* National Mean average for all scores reported not available for 2021.

**TEXAS TECH UNIVERSITY HEALTH SCIENCES CENTER
STATE BOARD PASS RATES FOR FIRST TIME CANDIDATES**

SCHOOL OF NURSING

YEAR	PASS RATE
2012	91.42%
2013	86.45%
2014	86.51%
2015	90.45%
2016	93.42%
2017	97.60%
2018	96.22%
2019	97.22%
2020	97.21%
2021	93.88% *

* NCLEX results from the Texas Board of Nursing (BON) are not available as of Nov. 30, 2021. The Texas BON is converting to a calendar year for reporting purposes. Assuming the transition to CY reporting begins in 2021, the official BON report will not be received until early January 2022. The only official data is from September 2020.

**TEXAS TECH UNIVERSITY HEALTH SCIENCES CENTER
PASS RATES FOR FIRST TIME
STATE & NATIONAL LICENSING EXAMINATION**

SCHOOL OF PHARMACY

YEAR	PASS RATE
2012	100%
2013	95.70%
2014	97.48%
2015	95.07%
2016	88.39% *
2017	93.06%
2018	91.67%
2019	86.9%
2020	92.62%
2021	93.66%

* The Pass Rate was lowered in 2015 by the National Board, and in 2016, new Competencies were implemented in the NAPLEX Exam.

**TEXAS TECH UNIVERSITY HEALTH SCIENCES CENTER
USMLE PASS RATES FOR FIRST TIME TEST TAKERS**

SCHOOL OF MEDICINE

United States Medical Licensing Examination (USMLE)

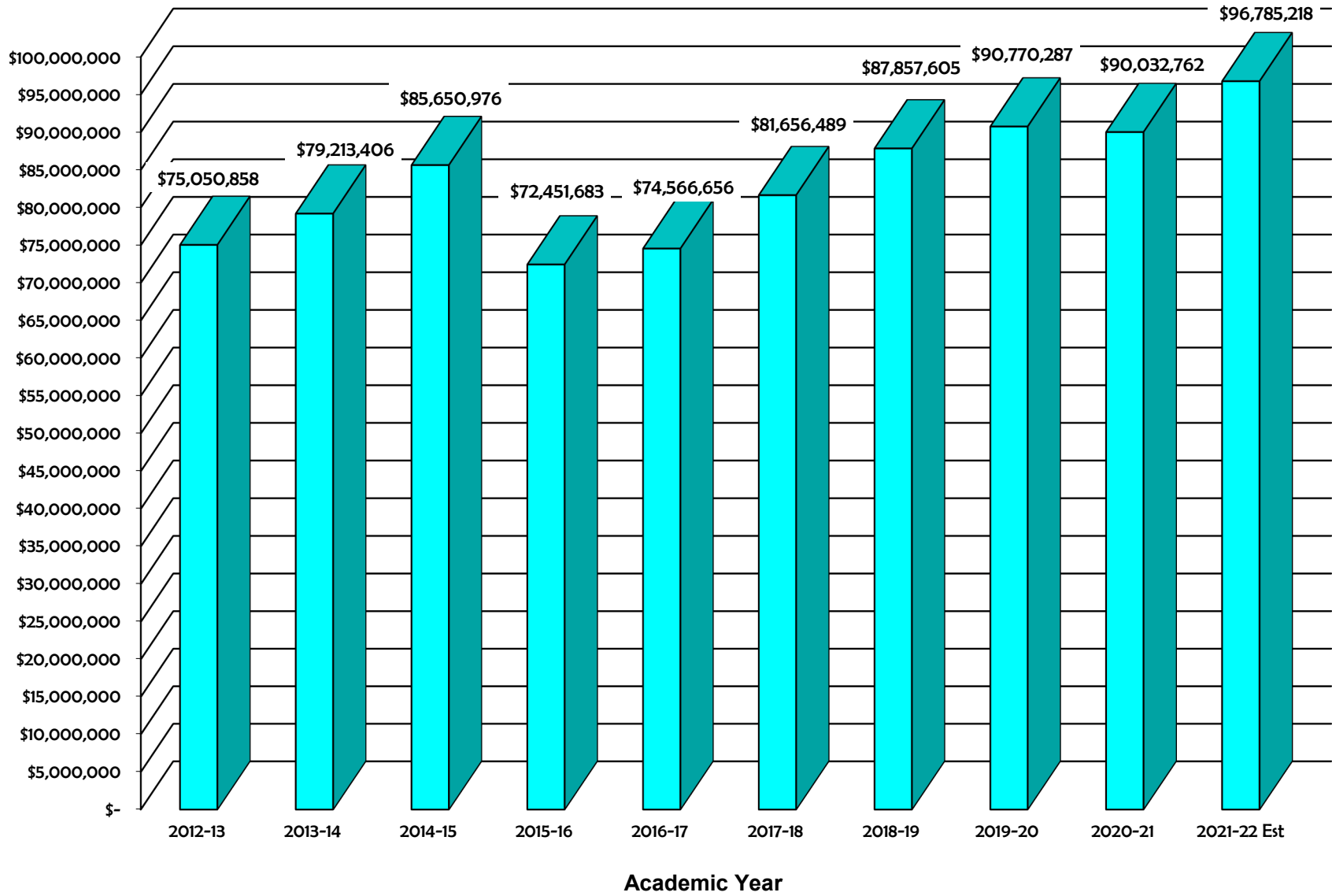
TEST GROUP	STEP I Pass Rate	STEP II Pass Rate	
		Clinical Knowledge	Clinical Skills
Class of 2012	94%	98%	99%
Class of 2013	97%	98%	96%
Class of 2014	97%	96%	95%
Class of 2015	94%	94%	94%
Class of 2016	97%	95%	93%
Class of 2017	94%	94%	92%
Class of 2018	95%	95%	94%
Class of 2019	98%	99%	93%
Class of 2020	98%	99%	96%
Class of 2021	98%	100%	N/A *

This table describes the USMLE performance of each graduating class of TTUHSC medical students.

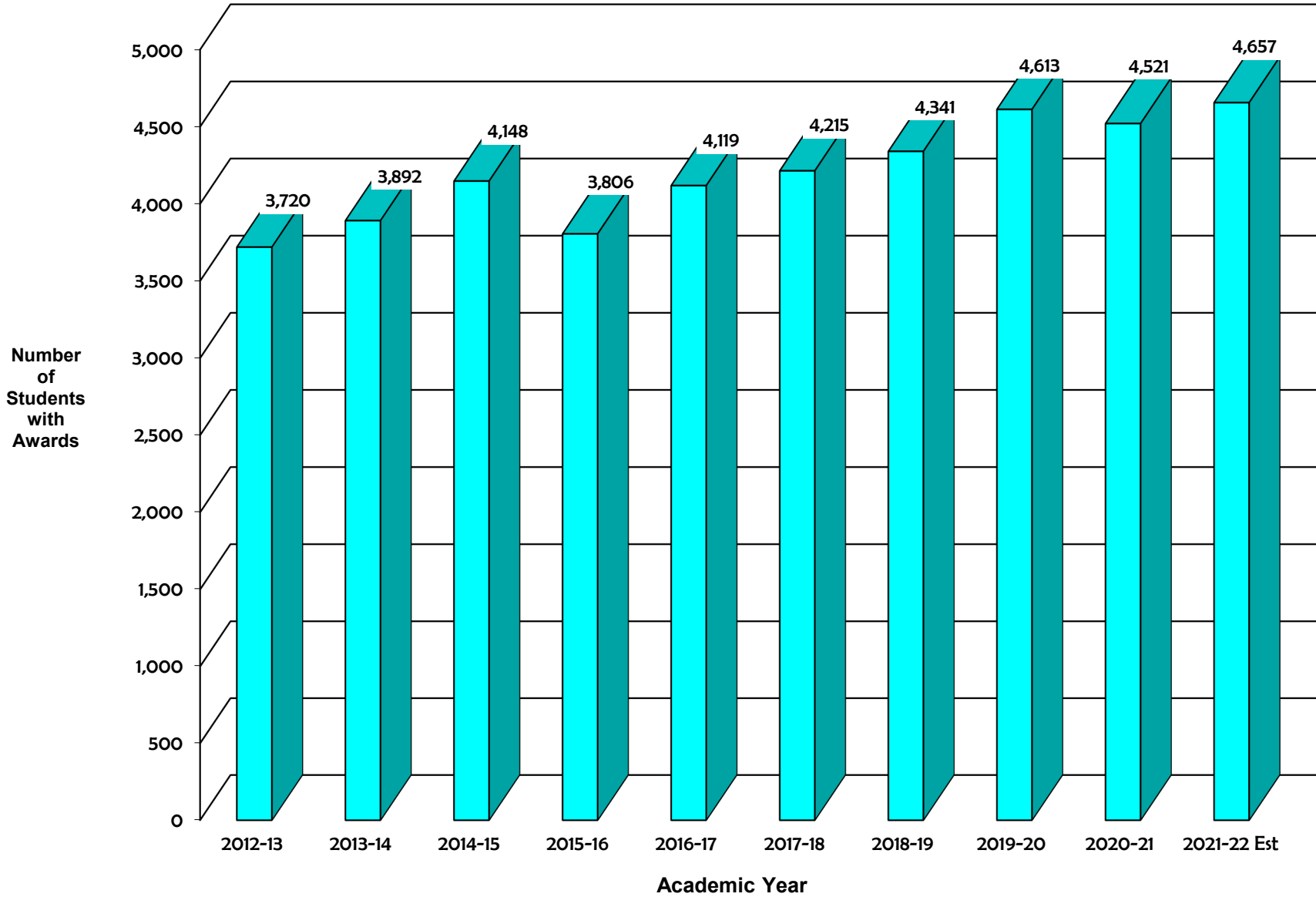
- Step I is taken after the completion of Year 2 and must be taken before the beginning of Year 3.
- Step II must be taken during Year 4 prior to graduation.

* Effective March 2021, Step II Clinical Skills portion of the examination sequence will no longer be administered.

Financial Aid Dollars Awarded to Students 2012-13 through 2021-22 est.



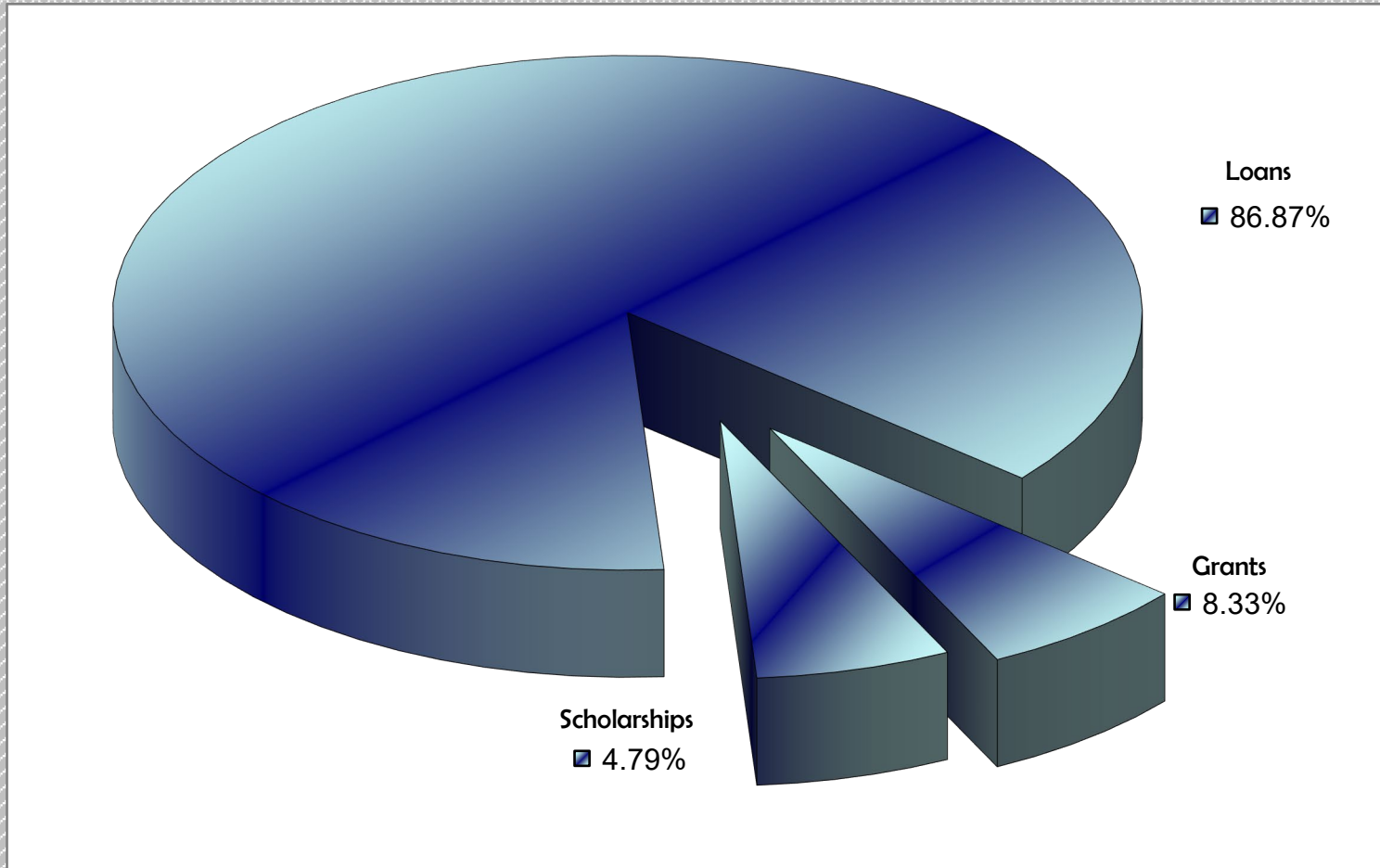
Number of Students Awarded Financial Aid 2012-13 through 2021-22 est.



Source: Office of Student Financial Aid

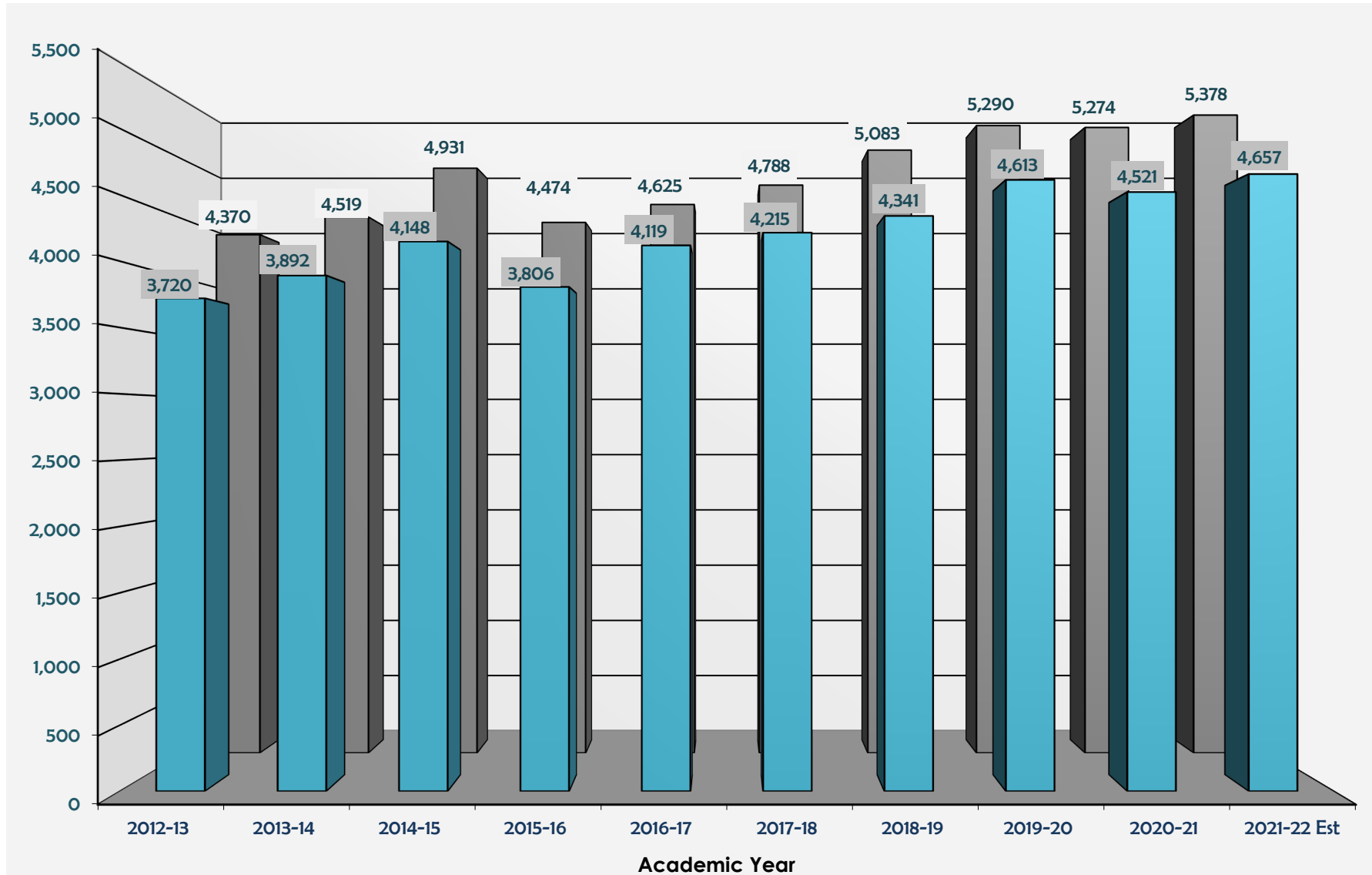
HSC El Paso numbers are excluded beginning 2015-16

Financial Aid Awarded by Category
2021-2022 est. Academic Year



GRANTS	-	SCHOLARSHIPS	-	LOANS
\$8,066,220		\$4,639,252		\$84,079,747

**Student Enrollment / Financial Aid Recipients
2012-13 through 2021-22 est.**



*Number of Students Enrolled in Fall and
Number of Students Receiving Financial Aid*

RESIDENTS

Selected Enrollment Statistics for Residency Programs
School of Medicine
As of September 1st

	2017				2018				2019				2020				2021			
<i>Ethnicity</i>	AM	LB	PB	<i>Total</i>	AM	LB	PB	<i>Total</i>	AM	LB	PB	<i>Total</i>	AM	LB	PB	<i>Total</i>	AM	LB	PB	<i>Total</i>
White	41	140	42	223	39	138	41	218	44	152	27	223	44	163	27	234	38	179	26	243
Black	8	12	6	26	11	12	6	29	13	12	7	32	11	9	9	29	9	9	12	30
American Indian	0	2	3	5	0	2	2	4	0	2	2	4	1	0	0	1	1	0	0	1
Hispanic	6	37	20	63	6	42	15	63	6	46	22	74	7	50	24	81	9	47	29	85
Asian/Pac Islander	44	76	50	170	41	69	54	164	37	66	65	168	39	76	74	189	42	77	79	198
Other	0	0	0	0	0	0	0	0	0	0	0	0	0	2	0	2	0	0	0	0
TOTAL	99	267	121	487	97	263	118	478	100	278	123	501	102	300	134	536	99	312	146	557
<i>Sex</i>	AM	LB	OD	<i>Total</i>	AM	LB	OD	<i>Total</i>	AM	LB	OD	<i>Total</i>	AM	KB	OB	<i>Total</i>	AM	KB	OB	<i>Total</i>
Male	47	158	65	270	42	159	65	266	49	172	62	283	55	173	61	289	44	135	79	258
Female	52	109	56	217	55	104	53	212	51	106	61	218	47	127	73	247	55	177	67	299
TOTAL	99	267	121	487	97	263	118	478	100	278	123	501	102	300	134	536	99	312	146	557

SCHOOL OF MEDICINE - RESIDENT DISTRIBUTION

SEPTEMBER 1, 2021

DESCRIPTION	AMARILLO	LUBBOCK	PERMIAN BASIN	TOTAL
Anesthesiology	0	16	0	16
Pain Management	0	2	0	2
Dermatology	0	9	0	9
MOHS	0	1	0	1
Emergency Medicine	0	16	0	16
Family Medicine	26	37	63	126
Emergency Medicine (non-ACGME)	0	0	3	3
Geriatrics	0	1	0	1
Hospice / Palliative Care	0	2	0	2
Sports Medicine	0	2	0	2
Internal Medicine	39	44	39	122
Cardiovascular Diseases	0	9	0	9
Endocrinology / Metabolic	0	0	4	4
Hematology / Oncology	0	6	0	6
Infectious Diseases	0	2	0	2
Interventional Cardiology	0	1	0	1
Nephrology	0	1	0	1
Pulmonary / Critical Care	0	11	0	11
Neurology	0	16	0	16
OB/Gyn	13	13	15	41
Ophthalmology	0	16	0	16
Orthopaedics	0	18	0	18
Otolaryngology	0	5	0	5
Pediatrics	21	24	0	45
Pediatric Hospitalist	0	2	0	2
Psychiatry	0	19	18	37
Child & Adolescent Psychiatry	0	1	4	5
Surgery	0	30	0	30
Breast Oncology (non-ACGME)	0	1	0	1
Burn and Wound (non-ACGME)	0	2	0	2
Urology	0	5	0	5
TOTALS	99	312	146	557

Selected Enrollment Statistics for Residency Programs
 Jerry H. Hodge School of Pharmacy
 As of September 1st

<i>Ethnicity</i>	2017					2018					2019					2020					2021				
	AM	EP	LB	DA	TOTAL	AM	EP	LB	DA	TOTAL	AM	AB	LB	DA	TOTAL	AM	AB	LB	DA	TOTAL	AM	AB	LB	DA	TOTAL
White	4	0	4	4	12	4	0	4	6	14	4	0	4	4	12	4	0	4	4	12	4	0	3	4	11
Black	0	0	0	0	1	0	0	1	0	1	0	0	1	1	2	1	0	0	0	1	0	0	0	0	0
American Indian	0	0	0	0	0	0	0	0	0	0	0	0	0	0	0	0	0	0	0	0	0	0	0	0	0
Hispanic	0	0	0	0	0	0	0	0	0	0	0	0	0	0	0	0	0	0	2	2	1	0	0	2	3
Asian/Pac Islander	2	0	0	1	3	1	0	0	0	1	1	0	0	2	3	0	0	0	2	2	0	0	1	2	3
Other	0	0	0	1	1	0	0	0	0	0	0	0	0	1	1	0	0	0	0	0	0	0	0	0	0
TOTAL	6	0	4	6	17	5	0	5	6	16	5	0	5	8	18	5	0	4	8	17	5	0	4	8	17
<i>Sex</i>	AM	EP	LB	DA	TOTAL	AM	EP	LB	DA	TOTAL	AM	AB	LB	DA	TOTAL	AM	AB	LB	DA	TOTAL	AM	AB	LB	DA	TOTAL
Male	1	0	2	0	3	0	0	1	1	2	0	0	3	2	5	2	0	3	1	6	2	0	1	1	4
Female	5	0	2	6	14	5	0	4	5	14	5	0	2	6	13	3	0	1	7	11	3	0	3	7	13
TOTAL	6	0	4	6	17	5	0	5	6	16	5	0	5	8	18	5	0	4	8	17	5	0	4	8	17

**JERRY H. HODGE SCHOOL OF PHARMACY
RESIDENT DISTRIBUTION
SEPTEMBER 1, 2021**

DESCRIPTION	AMARILLO	ABILENE	LUBBOCK	DALLAS	TOTAL
Ambulatory Care	1	0	0	0	1
Community Practice	0	0	0	1	1
Critical Care	0	0	0	0	0
Geriatrics	0	0	0	1	1
Hematology/Oncology	0	0	0	1	1
Infectious Diseases	0	0	0	0	0
Pediatrics	0	0	0	0	0
Pharmacotherapy	4	0	4	0	8
Pharmacy Practice	0	0	0	5	5
Psychiatry	0	0	0	0	0
TOTALS	5	0	4	8	17

PERSONNEL

**TEXAS TECH UNIVERSITY HEALTH SCIENCES CENTER
FULL-TIME FACULTY AND STAFF HISTORY
DEMOGRAPHICS
FALL 2017 to FALL 2021**

		Fall 2017		Fall 2018		Fall 2019		Fall 2020		Fall 2021	
FULL-TIME STAFF EMPLOYEES		Headcount	Percent	Headcount	Percent	Headcount	Percent	Headcount	Percent	Headcount	Percent
Total Full-time Staff Employees:		3,546	100.00%	3,645	100.00%	3,762	100.00%	3,740	100.00%	3,704	100.00%
Gender	Male	1,021	28.79%	1,035	28.40%	1,070	28.44%	1,060	28.34%	1,063	28.70%
	Female	2,525	71.21%	2,610	71.60%	2,692	71.56%	2,680	71.66%	2,641	71.30%
Ethnicity	American Indian	17	0.48%	18	0.49%	16	0.43%	13	0.35%	15	0.40%
	Asian	288	8.12%	296	8.12%	303	8.05%	313	8.37%	313	8.45%
	Black	188	5.30%	194	5.32%	202	5.37%	194	5.19%	198	5.35%
	Hispanic	968	27.30%	993	27.24%	1,048	27.86%	1,057	28.26%	1,069	28.86%
	Multiple	7	0.20%	19	0.52%	25	0.66%	55	1.47%	21	0.57%
	Native Hawaiian/Pacific Islander	2	0.06%	0	0.00%	1	0.03%	1	0.03%	2	0.05%
	White	2,076	58.54%	2,125	58.31%	2,167	57.60%	2,107	56.33%	2,086	56.32%
FULL-TIME FACULTY EMPLOYEES		Headcount	Percent	Headcount	Percent	Headcount	Percent	Headcount	Percent	Headcount	Percent
Total Full-time Faculty Employees:		741	100.00%	756	100.00%	766	100.00%	763	100.00%	753	100.00%
Gender	Male	359	48.45%	362	47.88%	364	47.52%	362	47.44%	354	47.01%
	Female	382	51.55%	394	52.12%	402	52.48%	401	52.56%	399	52.99%
Ethnicity	American Indian	2	0.27%	2	0.26%	3	0.39%	3	0.39%	3	0.40%
	Asian	140	18.90%	147	19.44%	149	19.45%	144	18.87%	145	19.26%
	Black	34	4.59%	38	5.03%	42	5.48%	43	5.64%	40	5.31%
	Hispanic	51	6.88%	48	6.35%	51	6.66%	57	7.47%	60	7.97%
	Multiple	1	0.13%	0	0.00%	2	0.26%	9	1.18%	1	0.13%
	Native Hawaiian/Pacific Islander	1	0.13%	0	0.00%	0	0.00%	0	0.00%	0	0.00%
	White	512	69.10%	521	68.92%	519	67.76%	507	66.45%	504	66.93%

SOURCE: Fall 2021 data was extracted from the Texas Tech Human Resource Information System on Oct. 2, 2021.

**TEXAS TECH UNIVERSITY HEALTH SCIENCES CENTER
FULL-TIME FACULTY AND STAFF HISTORY
HEADCOUNT BY CAMPUS
FALL 2017 to FALL 2021**

FACULTY		Fall 2017	Fall 2018	Fall 2019	Fall 2020	Fall 2021
Campus	Abilene	45	45	46	44	40
	Amarillo	124	128	126	120	113
	Managed Care	0	0	0	0	0
	Dallas	27	28	33	28	29
	Lubbock	468	480	491	498	503
	Permian Basin	77	75	70	73	68
	Faculty Totals		741	756	766	763

STAFF		Fall 2017	Fall 2018	Fall 2019	Fall 2020	Fall 2021
Campus	Abilene	50	60	62	58	56
	Amarillo	531	525	524	518	503
	Managed Care	617	652	699	641	603
	Dallas	11	17	22	17	18
	Lubbock	1,953	2,001	2,056	2,097	2,122
	Permian Basin	384	390	399	409	402
	Staff Totals		3,546	3,645	3,762	3,740

FACULTY & STAFF		Fall 2017	Fall 2018	Fall 2019	Fall 2020	Fall 2021
Campus	Abilene	95	105	108	102	96
	Amarillo	655	653	650	638	616
	Managed Care	617	652	699	641	603
	Dallas	38	45	55	45	47
	Lubbock	2,421	2,481	2,547	2,595	2,625
	Permian Basin	461	465	469	482	470
	Faculty & Staff Totals		4,287	4,401	4,528	4,503

SOURCE: Fall 2021 data was extracted from the Texas Tech Human Resource Information System on Oct. 2, 2021.

NOTES: Midland and Odessa campuses are now combined to reflect the Permian Basin.

**TEXAS TECH UNIVERSITY HEALTH SCIENCES CENTER
ALL CENTERS
FULL-TIME FACULTY
FALL 2021**

	GENDER			ETHNICITY						
	TOTAL	MALE	FEMALE	American Indian	Asian	Black	Hispanic	Multiple	Pacific Islander	White
GSBS - Public Health	9	3	6	0	2	1	0	0	0	6
School of Health Professions	88	39	49	0	7	6	4	0	0	71
School of Nursing	133	11	122	0	4	6	12	0	0	111
Jerry H. Hodge School of Pharmacy	95	41	54	0	16	2	6	0	0	71
School of Medicine	428	260	168	3	116	25	38	1	0	245
Full-time Faculty Totals:	753	354	399	3	145	40	60	1	0	504

SOURCE: Fall 2021 data was extracted from the Texas Tech Human Resource Information System on Oct. 2, 2021.

**TEXAS TECH UNIVERSITY HEALTH SCIENCES CENTER
FULL-TIME FACULTY COUNT BY CAMPUS AND SCHOOL
FALL 2021**

CAMPUS	GENDER			ETHNICITY						
	TOTAL	MALE	FEMALE	Am. Indian	Asian	Black	Hispanic	Multiple	PI	White
ABILENE CAMPUS										
School of Nursing	18	0	18	0	0	1	1	0	0	16
Jerry H. Hodge School of Pharmacy	18	7	11	0	6	0	0	0	0	12
GSBS	4	0	4	0	1	0	0	0	0	3
Abilene Campus Total	40	7	33	0	7	1	1	0	0	31
AMARILLO CAMPUS										
School of Health Professions	3	1	2	0	0	0	0	0	0	3
School of Nursing	2	0	2	0	0	0	0	0	0	2
Jerry H. Hodge School of Pharmacy	40	22	18	0	6	0	1	0	0	33
School of Medicine	68	43	25	0	19	6	2	0	0	41
Amarillo Campus Total	113	66	47	0	25	6	3	0	0	79
DALLAS CAMPUS										
Jerry H. Hodge School of Pharmacy	28	8	20	0	3	2	4	0	0	19
School of Nursing	1	1	0	0	0	0	0	0	0	1
Dallas Campus Total	29	9	20	0	3	2	4	0	0	20
LUBBOCK CAMPUS										
GSBS	5	3	2	0	1	1	0	0	0	3
School of Health Professions	74	34	40	0	6	5	3	0	0	60
School of Nursing	99	10	89	0	4	4	11	0	0	80
Jerry H. Hodge School of Pharmacy	9	4	5	0	1	0	1	0	0	7
School of Medicine	316	190	126	3	81	14	29	1	0	188
Lubbock Campus Total	503	241	262	3	93	24	44	1	0	338
PERMIAN BASIN CAMPUSES										
School of Health Professions	11	4	7	0	1	1	1	0	0	8
School of Nursing	13	0	13	0	0	1	0	0	0	12
School of Medicine	44	27	17	0	16	5	7	0	0	16
Permian Basin Campuses Total	68	31	37	0	17	7	8	0	0	36
ALL CAMPUSES										
Full-Time Faculty - OVERALL TOTALS	753	354	399	3	145	40	60	1	0	504

SOURCE: Fall 2021 data was extracted from the Texas Tech Human Resource Information System on Oct 2, 2021.

NOTES: Midland and Odessa campuses are now combined to reflect the Permian Basin.

**TEXAS TECH UNIVERSITY HEALTH SCIENCES CENTER
FULL-TIME STAFF BY CAMPUS
FALL 2021**

	GENDER			ETHNICITY						
	TOTAL	MALE	FEMALE	American Indian	Asian	Black	Hispanic	Multiple	Pacific Islander	White
ABILENE CAMPUS	56	20	36	0	1	0	14	0	0	41
AMARILLO CAMPUS	503	138	365	5	52	18	86	3	0	339
MANAGED CARE	603	149	454	2	11	40	148	8	0	394
DALLAS CAMPUS	18	8	10	0	5	3	2	0	0	8
LUBBOCK CAMPUS	2,122	653	1,469	6	159	111	637	10	2	1,197
PERMIAN BASIN CAMPUSES	402	95	307	2	85	26	182	0	0	107
<i>Full-time Staff Totals:</i>	3,704	1,063	2,641	15	313	198	1,069	21	2	2,086

SOURCE: Fall 2021 data was extracted from the Texas Tech Human Resource Information System on Oct. 2, 2021.

NOTE: Midland and Odessa campuses are now combined to reflect the Permian Basin.

TEXAS TECH UNIVERSITY HEALTH SCIENCES CENTER

**FIVE YEAR HISTORY
BUDGETED FTE'S BY CAMPUS**

CAMPUS	FY 2018	FY 2019	FY 2020	FY 2021	FY 2022
Lubbock	2,841	2,896	2,979	3,037	3,076
Amarillo	792	760	765	766	738
Permian Basin	531	546	540	532	505
Dallas	35	40	38	34	42
Abilene	100	102	103	90	92
Managed Care	724	733	769	745	788
TOTAL	5,023	5,077	5,194	5,204	5,241

**TEXAS TECH UNIVERSITY HEALTH SCIENCES CENTER
BUDGETED FTE DETAIL BY CAMPUS / BY SCHOOL
FY 2022**

	LUBBOCK	AMARILLO	PERMIAN BASIN	DALLAS	ABILENE	MANAGED CARE	TOTAL
Institutional	583.73	65.68	36.00	3.49	22.00		710.90
Managed Care						788.00	788.00
Rural Health	37.99						37.99
Research	36.29	2.23			3.03		41.55
Health Professions	163.85	3.96	19.59				187.40
Graduate School	55.25				1.00		56.25
Medicine	1,919.58	503.97	434.31				2,857.86
Nursing	271.13	2.00	15.31	4.00	25.00		317.44
Pharmacy	8.44	160.20		34.06	40.98		243.68
TOTAL	3,076.26	738.04	505.21	41.55	92.01	788.00	5,241.07

**TEXAS TECH UNIVERSITY HEALTH SCIENCES CENTER
EMPLOYEE HEADCOUNT BY CAMPUS**

CAMPUS	Full Time	Part Time	TOTAL
Lubbock	2,585	811	3,396
Amarillo	610	221	831
Permian Basin	465	79	544
Abilene	92	48	140
Dallas	47	12	59
Managed Care	600	22	622
TOTALS	4,399	1,193	5,592

**SOURCE: Banner System as of 10/1/21.
This count includes all faculty, staff, residents, working retirees,
recurrent faculty/staff, and student employees.**

LIBRARY

**LIBRARIES OF TEXAS TECH UNIVERSITY HEALTH SCIENCES CENTER
INVENTORY**

PRESTON SMITH LIBRARY OF THE HEALTH SCIENCES, LUBBOCK								
	Fall 2018		Fall 2019		Fall 2020 **		Fall 2021	
Bound Volumes *	182,496	\$19,918,977	109,496	\$16,406,979	40,494	\$6,702,432	14,069	\$2,948,149
A-V Material	7,115	\$452,533	7,115	\$452,533	7,108	\$452,215	5,838	\$412,671
TOTAL - Lubbock		\$20,371,510		\$16,859,512		\$7,154,647		\$3,360,820
HARRINGTON LIBRARY OF THE HEALTH SCIENCES, AMARILLO								
	Fall 2018		Fall 2019		Fall 2020		Fall 2021	
Bound Volumes *	56,316	\$5,693,454	55,601	\$5,648,970	55,614	\$5,649,270	49,698	\$5,281,599
A-V Material	3,591	\$191,403	439	\$44,421	437	\$44,410	105	\$8,349
TOTAL -Amarillo		\$5,884,857		\$5,693,391		\$5,693,680		\$5,289,948
LIBRARY OF THE HEALTH SCIENCES, ODESSA								
	Fall 2018		Fall 2019		Fall 2020		Fall 2021	
Bound Volumes *	32,434	\$2,472,765	31,620	\$2,430,098	30,442	\$2,318,889	19,897	\$1,404,266
A-V Material	925	\$18,495	681	\$10,199	60	\$884	113	\$1,679
TOTAL - Odessa		\$2,491,260		\$2,440,297		\$2,319,773		\$1,405,945
TOTAL		\$28,747,627		\$24,993,200		\$15,168,100		\$10,056,713

* In each case, the totals do not reflect journal volumes not bound for permanent retention, nor other materials not completely processed.

** Reduction due to downsizing of underutilized print collection.

***LIBRARIES OF TEXAS TECH UNIVERSITY HEALTH SCIENCES CENTER
E-RESOURCE STATISTICS***

E-resources form a major component of our acquisitions for the health sciences libraries. Inasmuch as they fit the definition for library resources as capitalized items as set forth in the SPA Process User's Guide I.4, we are reporting them in this report. Since they are all electronic items for use throughout the TTUHSC system, they are not rationalized to specific campuses, but rather are reported for all sites, including TTUHSC El Paso.

	Fall 2018		Fall 2019		Fall 2020		Fall 2021 *	
E-books	78,966	\$422,722	105,485	\$725,122	102,854	\$874,459	108,522	\$268,992
E-journals	24,725	\$2,479,392	25,616	\$2,861,407	26,433	\$2,728,933	28,340	\$1,701,362
E-databases	326	\$1,041,840	347	\$1,249,852	353	\$1,194,951	561	\$1,434,492
TOTAL		\$3,943,954		\$4,836,381		\$4,798,343		\$3,404,846

* The increase in number of electronic resources, along with decrease in price for these resources, is due to on-going negotiations between the publisher of ScienceDirect and the Libraries on the final price of this package.

FINANCIAL

RESEARCH

SPACE

ALUMNI

PRACTICE
INCOME PLANS

PERFORMANCE MEASURES